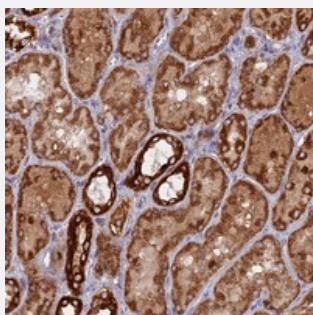


MPV17L polyclonal antibody

Catalog # PAB23765 Size 100 uL

Applications



Immunohistochemistry (Formalin/PFA-fixed paraffin-embedded sections)

Immunohistochemical staining of human kidney with MPV17L polyclonal antibody (Cat # PAB23765) shows strong cytoplasmic positivity in tubular cells.

Specification

Product Description	Rabbit polyclonal antibody raised against recombinant MPV17L.
Immunogen	Recombinant protein corresponding to amino acids of human MPV17L.
Sequence	SQQSGDGTFKSAFTILYTKGTSATEGYPKK
Host	Rabbit
Reactivity	Human
Form	Liquid
Purification	Antigen affinity purification
Isotype	IgG
Recommend Usage	Immunohistochemistry (1:10-1:20) The optimal working dilution should be determined by the end user.
Storage Buffer	In PBS, pH 7.2 (40% glycerol, 0.02% sodium azide)
Storage Instruction	Store at 4°C. For long term storage store at -20°C. Aliquot to avoid repeated freezing and thawing.

Note

This product contains sodium azide: a POISONOUS AND HAZARDOUS SUBSTANCE which should be handled by trained staff only.

Applications

- Immunohistochemistry (Formalin/PFA-fixed paraffin-embedded sections)

Immunohistochemical staining of human kidney with MPV17L polyclonal antibody (Cat # PAB23765) shows strong cytoplasmic positivity in tubular cells.

Gene Info — MPV17L

Entrez GeneID	255027
---------------	------------------------

Protein Accession#	Q2QL34
--------------------	------------------------

Gene Name	MPV17L
-----------	--------

Gene Alias	FLJ39599, MGC70356, MLPH1, MLPH2
------------	----------------------------------

Gene Description	MPV17 mitochondrial membrane protein-like
------------------	---

Gene Ontology	Hyperlink
---------------	---------------------------

Other Designations	Mpv17-like protein type 1 Mpv17-like protein type 2
--------------------	---