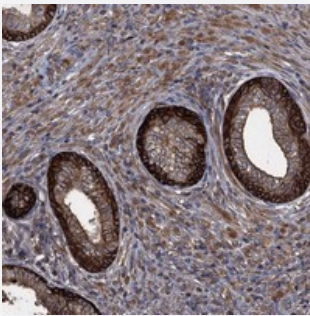


TXNDC11 polyclonal antibody

Catalog # PAB23763 Size 100 uL

Applications



Immunohistochemistry (Formalin/PFA-fixed paraffin-embedded sections)

Immunohistochemical staining of human prostate with TXNDC11 polyclonal antibody (Cat # PAB23763) shows distinct cytoplasmic positivity in glandular cells.

Specification

Product Description	Rabbit polyclonal antibody raised against recombinant TXNDC11.
Immunogen	Recombinant protein corresponding to amino acids of human TXNDC11.
Sequence	PSLNHIFIQLARNLPMDTFTVARIDVSQNDLPWEFMVDRLPTVLFFPCNRKDLSVKYPEDVPITLPN LLRFILHHSDPASSPQNVANSPTKECLQ
Host	Rabbit
Reactivity	Human
Form	Liquid
Purification	Antigen affinity purification
Isotype	IgG
Recommend Usage	Immunohistochemistry (1:200-1:500) The optimal working dilution should be determined by the end user.
Storage Buffer	In PBS, pH 7.2 (40% glycerol, 0.02% sodium azide)

Storage Instruction

Store at 4°C. For long term storage store at -20°C.
Aliquot to avoid repeated freezing and thawing.

Note

This product contains sodium azide: a POISONOUS AND HAZARDOUS SUBSTANCE which should be handled by trained staff only.

Applications

- Immunohistochemistry (Formalin/PFA-fixed paraffin-embedded sections)

Immunohistochemical staining of human prostate with TXNDC11 polyclonal antibody (Cat # PAB23763) shows distinct cytoplasmic positivity in glandular cells.

Gene Info — TXNDC11

Entrez GeneID[51061](#)**Protein Accession#**[Q6PKC3](#)**Gene Name**

TXNDC11

Gene Alias

EFP1

Gene Description

thioredoxin domain containing 11

Gene Ontology[Hyperlink](#)**Other Designations**

EF-hand binding protein 1