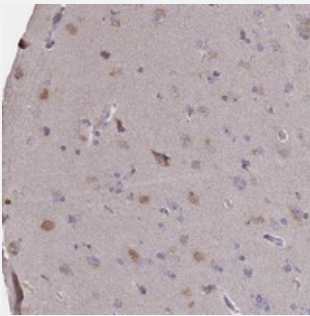


# ATF7IP2 polyclonal antibody

Catalog # PAB23757      Size 100 uL

## Applications



### Immunohistochemistry (Formalin/PFA-fixed paraffin-embedded sections)

Immunohistochemical staining of human cerebral cortex with ATF7IP2 polyclonal antibody (Cat # PAB23757) shows moderate cytoplasmic positivity in neuronal cells at 1:200-1:500 dilution.

## Specification

Product Description	Rabbit polyclonal antibody raised against recombinant ATF7IP2.
Immunogen	Recombinant protein corresponding to amino acids of human ATF7IP2.
Sequence	SVESPNLTTPITSNPTDTRKITSGNSSNSPNAEVMQKKLDSIIDLTKEGLSNCNTESPVSPLESH SKAASNSKETTPLAQNAVQVPESFEHLPPLPEPPAPL
Host	Rabbit
Reactivity	Human
Form	Liquid
Purification	Antigen affinity purification
Isotype	IgG
Recommend Usage	Immunohistochemistry (1:200-1:500) The optimal working dilution should be determined by the end user.
Storage Buffer	In PBS, pH 7.2 (40% glycerol, 0.02% sodium azide)

**Storage Instruction**

Store at 4°C. For long term storage store at -20°C.  
Aliquot to avoid repeated freezing and thawing.

**Note**

This product contains sodium azide: a POISONOUS AND HAZARDOUS SUBSTANCE which should be handled by trained staff only.

## Applications

- Immunohistochemistry (Formalin/PFA-fixed paraffin-embedded sections)

Immunohistochemical staining of human cerebral cortex with ATF7IP2 polyclonal antibody (Cat # PAB23757) shows moderate cytoplasmic positivity in neuronal cells at 1:200-1:500 dilution.

## Gene Info — ATF7IP2

**Entrez GeneID**[80063](#)**Protein Accession#**[Q5U623](#)**Gene Name**

ATF7IP2

**Gene Alias**

FLJ12668, MCAF2

**Gene Description**

activating transcription factor 7 interacting protein 2

**Gene Ontology**[Hyperlink](#)**Other Designations**

MBD1-containing chromatin associated factor 2|MBD1-containing chromatin-associated factor 2|  
OTTHUMP00000160167