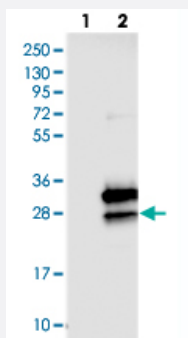


C16orf45 polyclonal antibody

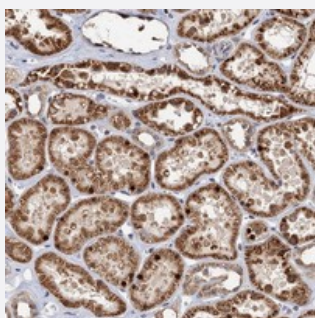
Catalog # PAB23750 Size 100 uL

Applications



Western Blot (Transfected lysate)

Western blot analysis of Lane 1: Negative control (vector only transfected HEK293T lysate), Lane 2: Over-expression Lysate (Co-expressed with a C-terminal myc-DDK tag (~3.1 kDa) in mammalian HEK293T cells) with C16orf45 polyclonal antibody (Cat # PAB23750) at 1:250-1:500 dilution.



Immunohistochemistry (Formalin/PFA-fixed paraffin-embedded sections)

Immunohistochemical staining of human kidney with C16orf45 polyclonal antibody (Cat # PAB23750) shows strong cytoplasmic and nuclear positivity in renal tubules at 1:1000-1:2500 dilution.

Specification

Product Description	Rabbit polyclonal antibody raised against recombinant C16orf45.
Immunogen	Recombinant protein corresponding to amino acids of human C16orf45.
Sequence	SLSTHLEAEKPLRRYGAVEETAWKTERLGRNQLDIISMAETTMMPREEIELEMAKIQRLREVLVRRE SELRFMDDIQLCKDIMDLKQEL
Host	Rabbit
Reactivity	Human
Form	Liquid

Purification	Antigen affinity purification
Isotype	IgG
Recommend Usage	Immunohistochemistry (1:1000-1:2500) Western Blot (1:250-1:500) The optimal working dilution should be determined by the end user.
Storage Buffer	In PBS, pH 7.2 (40% glycerol, 0.02% sodium azide)
Storage Instruction	Store at 4°C. For long term storage store at -20°C. Aliquot to avoid repeated freezing and thawing.
Note	This product contains sodium azide: a POISONOUS AND HAZARDOUS SUBSTANCE which should be handled by trained staff only.

Applications

- Western Blot (Transfected lysate)

Western blot analysis of Lane 1: Negative control (vector only transfected HEK293T lysate), Lane 2: Over-expression Lysate (Co-expressed with a C-terminal myc-DDK tag (~3.1 kDa) in mammalian HEK293T cells) with C16orf45 polyclonal antibody (Cat # PAB23750) at 1:250-1:500 dilution.

- Immunohistochemistry (Formalin/PFA-fixed paraffin-embedded sections)

Immunohistochemical staining of human kidney with C16orf45 polyclonal antibody (Cat # PAB23750) shows strong cytoplasmic and nuclear positivity in renal tubules at 1:1000-1:2500 dilution.

Gene Info — C16orf45

Entrez GeneID	89927
Protein Accession#	Q96MC5
Gene Name	C16orf45
Gene Alias	FLJ32618
Gene Description	chromosome 16 open reading frame 45
Gene Ontology	Hyperlink
Other Designations	hypothetical protein LOC89927