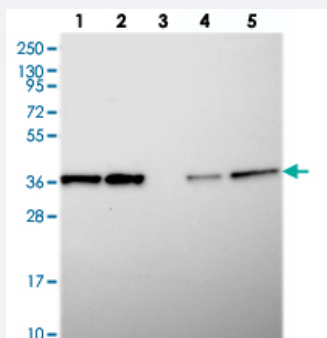


CHORDC1 polyclonal antibody

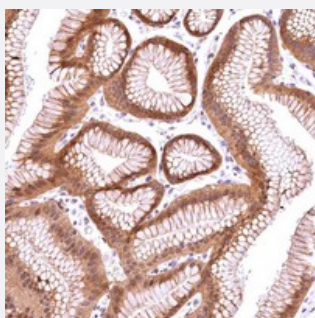
Catalog # PAB23742 Size 100 uL

Applications



Western Blot

Western blot analysis of Lane 1: RT-4, Lane 2: U-251 MG, Lane 3: Human Plasma, Lane 4: Liver, Lane 5: Tonsil with CHORDC1 polyclonal antibody (Cat # PAB23742) at 1:250-1:500 dilution.



Immunohistochemistry (Formalin/PFA-fixed paraffin-embedded sections)

Immunohistochemical staining of human stomach with CHORDC1 polyclonal antibody (Cat # PAB23742) shows moderate cytoplasmic and nuclear positivity in glandular cells at 1:200-1:500 dilution.

Specification

Product Description	Rabbit polyclonal antibody raised against recombinant CHORDC1.
Immunogen	Recombinant protein corresponding to amino acids of human CHORDC1.
Sequence	LKGWSCCKRRRTTDFSDFLSVGCTKGRHNSEKPPEPVKPEVKTTEKKELCELPKPKFQEHIIQAPK PVEAI
Host	Rabbit
Reactivity	Human
Form	Liquid

Purification	Antigen affinity purification
Isotype	IgG
Recommend Usage	Immunohistochemistry (1:200-1:500) Western Blot (1:250-1:500) The optimal working dilution should be determined by the end user.
Storage Buffer	In PBS, pH 7.2 (40% glycerol, 0.02% sodium azide)
Storage Instruction	Store at 4°C. For long term storage store at -20°C. Aliquot to avoid repeated freezing and thawing.
Note	This product contains sodium azide: a POISONOUS AND HAZARDOUS SUBSTANCE which should be handled by trained staff only.

Applications

- Western Blot

Western blot analysis of Lane 1: RT-4, Lane 2: U-251 MG, Lane 3: Human Plasma, Lane 4: Liver, Lane 5: Tonsil with CHORDC1 polyclonal antibody (Cat # PAB23742) at 1:250-1:500 dilution.

- Immunohistochemistry (Formalin/PFA-fixed paraffin-embedded sections)

Immunohistochemical staining of human stomach with CHORDC1 polyclonal antibody (Cat # PAB23742) shows moderate cytoplasmic and nuclear positivity in glandular cells at 1:200-1:500 dilution.

Gene Info — CHORDC1

Entrez GeneID	26973
Protein Accession#	Q9UHD1
Gene Name	CHORDC1
Gene Alias	CHP1
Gene Description	cysteine and histidine-rich domain (CHORD)-containing 1
Omim ID	604353
Gene Ontology	Hyperlink
Gene Summary	zinc binding protein 1 cysteine and histidine-rich domain (CHORD)-containing
Other Designations	chord domain-containing protein 1 cysteine and histidine-rich domain (CHORD)-containing, zinc binding protein 1 cysteine and histidine-rich domain (CHORD)-containing, zinc-binding protein 1