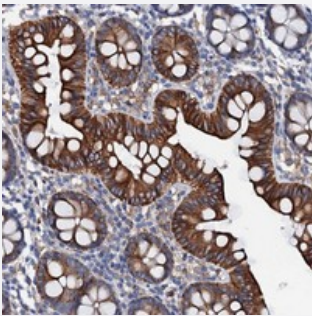


# OTOL1 polyclonal antibody

Catalog # PAB23739      Size 100 uL

## Applications



### Immunohistochemistry (Formalin/PFA-fixed paraffin-embedded sections)

Immunohistochemical staining of human colon with OTOL1 polyclonal antibody (Cat # PAB23739) shows strong cytoplasmic and membranous positivity in glandular cells at 1:200-1:500 dilution.

## Specification

|                     |  |
|---------------------|--|
| Product Description | Rabbit polyclonal antibody raised against recombinant OTOL1.   |
| Immunogen           | Recombinant protein corresponding to amino acids of human OTOL1.   |
| Sequence            | SYHITVRGRPARISLVAQNKKQFKSRETLYGQEIDQASLLVILKLSAGDQVWLEVSKDWNGVYVSA<br>EDDSI                              |
| Host                | Rabbit   |
| Reactivity          | Human  |
| Form                | Liquid   |
| Purification        | Antigen affinity purification  |
| Isotype             | IgG  |
| Recommend Usage     | Immunohistochemistry (1:200-1:500)<br>The optimal working dilution should be determined by the end user. |
| Storage Buffer      | In PBS, pH 7.2 (40% glycerol, 0.02% sodium azide)  |

**Storage Instruction**

Store at 4°C. For long term storage store at -20°C.  
Aliquot to avoid repeated freezing and thawing.

**Note**

This product contains sodium azide: a POISONOUS AND HAZARDOUS SUBSTANCE which should be handled by trained staff only.

## Applications

- Immunohistochemistry (Formalin/PFA-fixed paraffin-embedded sections)

Immunohistochemical staining of human colon with OTOL1 polyclonal antibody (Cat # PAB23739) shows strong cytoplasmic and membranous positivity in glandular cells at 1:200-1:500 dilution.

## Gene Info — OTOL1

**Entrez GeneID**[131149](#)**Protein Accession#**[A6NHNO](#)**Gene Name**

OTOL1

**Gene Alias**

-

**Gene Description**

Otolin-1

**Gene Ontology**[Hyperlink](#)**Other Designations**

hypothetical protein LOC131149