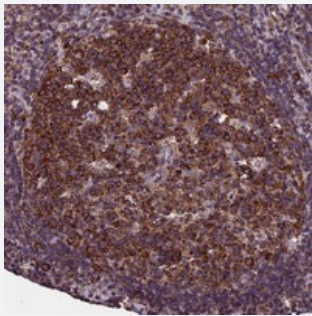


# SLC9A5 polyclonal antibody

Catalog # PAB23734      Size 100 uL

## Applications



### Immunohistochemistry (Formalin/PFA-fixed paraffin-embedded sections)

Immunohistochemical staining of human lymph node with SLC9A5 polyclonal antibody (Cat # PAB23734) shows strong cytoplasmic positivity in germinal center cells.

## Specification

<b>Product Description</b>	Rabbit polyclonal antibody raised against recombinant SLC9A5.
<b>Immunogen</b>	Recombinant protein corresponding to amino acids of human SLC9A5.
<b>Sequence</b>	ASPPCNQAPILTCLPPHPRGTEEPQVPLHLPSDPRSSFAFPPSLAKAGRSRSESSADLPQQQEL QPLMGHKDHTHL
<b>Host</b>	Rabbit
<b>Reactivity</b>	Human
<b>Form</b>	Liquid
<b>Purification</b>	Antigen affinity purification
<b>Isotype</b>	IgG
<b>Recommend Usage</b>	Immunohistochemistry (1:500-1:1000) The optimal working dilution should be determined by the end user.
<b>Storage Buffer</b>	In PBS, pH 7.2 (40% glycerol, 0.02% sodium azide)

**Storage Instruction**

Store at 4°C. For long term storage store at -20°C.  
Aliquot to avoid repeated freezing and thawing.

**Note**

This product contains sodium azide: a POISONOUS AND HAZARDOUS SUBSTANCE which should be handled by trained staff only.

## Applications

- Immunohistochemistry (Formalin/PFA-fixed paraffin-embedded sections)

Immunohistochemical staining of human lymph node with SLC9A5 polyclonal antibody (Cat # PAB23734) shows strong cytoplasmic positivity in germinal center cells.

## Gene Info — SLC9A5

**Entrez GeneID**[6553](#)**Protein Accession#**[Q14940](#)**Gene Name**

SLC9A5

**Gene Alias**

NHE5

**Gene Description**

solute carrier family 9 (sodium/hydrogen exchanger), member 5

**Omim ID**[600477](#)**Gene Ontology**[Hyperlink](#)**Gene Summary**

O

**Other Designations**

solute carrier family 9 (sodium/hydrogen exchanger), isoform 5