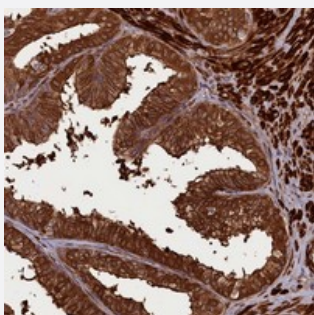


CCDC102A polyclonal antibody

Catalog # PAB23726 Size 100 uL

Applications



Immunohistochemistry (Formalin/PFA-fixed paraffin-embedded sections)

Immunohistochemical staining of human prostate with CCDC102A polyclonal antibody (Cat # PAB23726) shows strong cytoplasmic positivity in glandular cells at 1:20-1:50 dilution.

Specification

Product Description	Rabbit polyclonal antibody raised against recombinant CCDC102A.
Immunogen	Recombinant protein corresponding to amino acids of human CCDC102A.
Sequence	LPWEDTAATEEEASKLTALRLRLDESQKVLLKEREDKLALSRNIEKLEGELSQWKIKYEELSKTKQ EMLKQL
Host	Rabbit
Reactivity	Human
Form	Liquid
Purification	Antigen affinity purification
Isotype	IgG
Recommend Usage	Immunohistochemistry (1:20-1:50) The optimal working dilution should be determined by the end user.
Storage Buffer	In PBS, pH 7.2 (40% glycerol, 0.02% sodium azide)

Storage Instruction

Store at 4°C. For long term storage store at -20°C.
Aliquot to avoid repeated freezing and thawing.

Note

This product contains sodium azide: a POISONOUS AND HAZARDOUS SUBSTANCE which should be handled by trained staff only.

Applications

- Immunohistochemistry (Formalin/PFA-fixed paraffin-embedded sections)

Immunohistochemical staining of human prostate with CCDC102A polyclonal antibody (Cat # PAB23726) shows strong cytoplasmic positivity in glandular cells at 1:20-1:50 dilution.

Gene Info — CCDC102A

Entrez GeneID[92922](#)**Protein Accession#**[Q96A19](#)**Gene Name**

CCDC102A

Gene Alias

MGC10992, MGC13119

Gene Description

coiled-coil domain containing 102A

Gene Ontology[Hyperlink](#)**Other Designations**

-