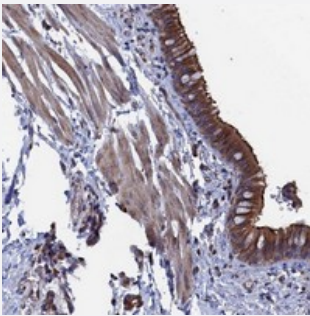


# NUTF2 polyclonal antibody

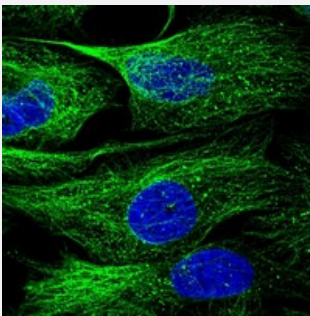
Catalog # PAB23725      Size 100 uL

## Applications



### Immunohistochemistry (Formalin/PFA-fixed paraffin-embedded sections)

Immunohistochemical staining of human bronchus with NUTF2 polyclonal antibody (Cat # PAB23725) shows strong cytoplasmic and membranous positivity in respiratory epithelial cells at 1:50-1:200 dilution.



### Immunofluorescence

Immunofluorescent staining of human cell line U-2 OS with NUTF2 polyclonal antibody (Cat # PAB23725) at 1-4 ug/mL dilution shows positivity in cytoskeleton (microtubules).

## Specification

Product Description	Rabbit polyclonal antibody raised against recombinant NUTF2.
Immunogen	Recombinant protein corresponding to amino acids of human NUTF2.
Sequence	MGDKPIWEQIGSSFIQHYQLFDNDRTQLGAIMDASCLTWEGQQFQGKAAMEKLSSLPFQK
Host	Rabbit
Reactivity	Human
Form	Liquid
Purification	Antigen affinity purification

<b>Isotype</b>	IgG
<b>Recommend Usage</b>	Immunohistochemistry (1:50-1:200) Immunofluorescence (1-4 ug/mL) The optimal working dilution should be determined by the end user.
<b>Storage Buffer</b>	In PBS, pH 7.2 (40% glycerol, 0.02% sodium azide)
<b>Storage Instruction</b>	Store at 4°C. For long term storage store at -20°C. Aliquot to avoid repeated freezing and thawing.
<b>Note</b>	This product contains sodium azide: a POISONOUS AND HAZARDOUS SUBSTANCE which should be handled by trained staff only.

## Applications

- Immunohistochemistry (Formalin/PFA-fixed paraffin-embedded sections)

Immunohistochemical staining of human bronchus with NUTF2 polyclonal antibody (Cat # PAB23725) shows strong cytoplasmic and membranous positivity in respiratory epithelial cells at 1:50-1:200 dilution.

- Immunofluorescence

Immunofluorescent staining of human cell line U-2 OS with NUTF2 polyclonal antibody (Cat # PAB23725) at 1-4 ug/mL dilution shows positivity in cytoskeleton (microtubules).

## Gene Info — NUTF2

<b>Entrez GeneID</b>	<a href="#">10204</a>
<b>Protein Accession#</b>	<a href="#">P61970</a>
<b>Gene Name</b>	NUTF2
<b>Gene Alias</b>	NTF2, PP15
<b>Gene Description</b>	nuclear transport factor 2
<b>Omim ID</b>	<a href="#">605813</a>
<b>Gene Ontology</b>	<a href="#">Hyperlink</a>
<b>Gene Summary</b>	The protein encoded by this gene is a cytosolic factor that facilitates protein transport into the nucleus. It interacts with the nuclear pore complex glycoprotein p62. This encoded protein acts at a relative late stage of nuclear protein import, subsequent to the initial docking of nuclear import ligand at the nuclear envelope. It is thought to be part of a multicomponent system of cytosolic factors that assemble at the pore complex during nuclear import. [provided by RefSeq]

**Other Designations**placental protein 15

---