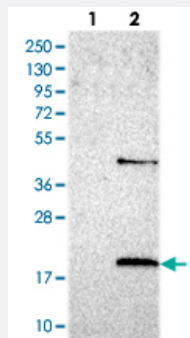


LSM4 polyclonal antibody

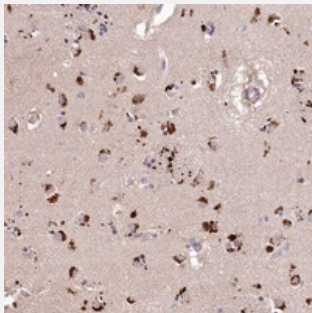
Catalog # PAB23720 Size 100 uL

Applications



Western Blot (Transfected lysate)

Western blot analysis of Lane 1: Negative control (vector only transfected HEK293T lysate), Lane 2: Over-expression Lysate (Co-expressed with a C-terminal myc-DDK tag (~3.1 kDa) in mammalian HEK293T cells) with LSM4 polyclonal antibody (Cat # PAB23720) at 1:250-1:500 dilution.



Immunohistochemistry (Formalin/PFA-fixed paraffin-embedded sections)

Immunohistochemical staining of human lateral ventricle with LSM4 polyclonal antibody (Cat # PAB23720) shows strong cytoplasmic positivity, with a granular pattern in neuronal cells at 1:200-1:500 dilution.

Specification

Product Description	Rabbit polyclonal antibody raised against recombinant LSM4.
Immunogen	Recombinant protein corresponding to amino acids of human LSM4.
Sequence	MLPLSLLKTAQNHMLVELKNGETYNGHLVSCDNWMNINLREVICTSRDGDKFWRMPECYIRGSTIKYLRIPDEIID
Host	Rabbit
Reactivity	Human
Form	Liquid

Purification	Antigen affinity purification
Isotype	IgG
Recommend Usage	Immunohistochemistry (1:200-1:500) Western Blot (1:250-1:500) The optimal working dilution should be determined by the end user.
Storage Buffer	In PBS, pH 7.2 (40% glycerol, 0.02% sodium azide)
Storage Instruction	Store at 4°C. For long term storage store at -20°C. Aliquot to avoid repeated freezing and thawing.
Note	This product contains sodium azide: a POISONOUS AND HAZARDOUS SUBSTANCE which should be handled by trained staff only.

Applications

- Western Blot (Transfected lysate)

Western blot analysis of Lane 1: Negative control (vector only transfected HEK293T lysate), Lane 2: Over-expression Lysate (Co-expressed with a C-terminal myc-DDK tag (~3.1 kDa) in mammalian HEK293T cells) with LSM4 polyclonal antibody (Cat # PAB23720) at 1:250-1:500 dilution.

- Immunohistochemistry (Formalin/PFA-fixed paraffin-embedded sections)

Immunohistochemical staining of human lateral ventricle with LSM4 polyclonal antibody (Cat # PAB23720) shows strong cytoplasmic positivity, with a granular pattern in neuronal cells at 1:200-1:500 dilution.

Gene Info — LSM4

Entrez GeneID	25804
Protein Accession#	Q9Y4Z0
Gene Name	LSM4
Gene Alias	YER112W
Gene Description	LSM4 homolog, U6 small nuclear RNA associated (S. cerevisiae)
Omim ID	607284
Gene Ontology	Hyperlink

Gene Summary

Sm-like proteins were identified in a variety of organisms based on sequence homology with the Sm protein family (see SNRPD2; MIM 601061). Sm-like proteins contain the Sm sequence motif, which consists of 2 regions separated by a linker of variable length that folds as a loop. The Sm-like proteins are thought to form a stable heteromer present in tri-snRNP particles, which are important for pre-mRNA splicing.[supplied by OMIM]

Other Designations

U6 snRNA-associated Sm-like protein|U6 snRNA-associated Sm-like protein 4

Pathway

- [RNA degradation](#)

Disease

- [Celiac Disease](#)
- [Genetic Predisposition to Disease](#)