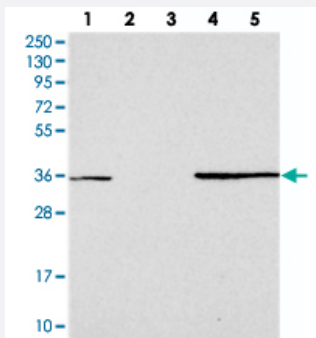


FAM98C polyclonal antibody

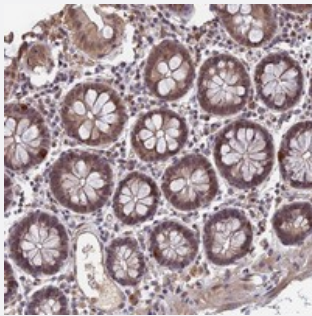
Catalog # PAB23719 Size 100 uL

Applications



Western Blot

Western blot analysis of Lane 1: RT-4, Lane 2: U-251 MG, Lane 3: Human Plasma, Lane 4: Liver, Lane 5: Tonsil with FAM98C polyclonal antibody (Cat # PAB23719) at 1:250-1:500 dilution.



Immunohistochemistry (Formalin/PFA-fixed paraffin-embedded sections)

Immunohistochemical staining of human colon with FAM98C polyclonal antibody (Cat # PAB23719) shows moderate nuclear positivity in glandular cells at 1:200-1:500 dilution.

Specification

Product Description	Rabbit polyclonal antibody raised against recombinant FAM98C.
Immunogen	Recombinant protein corresponding to amino acids of human FAM98C.
Sequence	EPGAGLRLLRFLCSELQATRLLCLRSLLDPSRPPLGEGVVEGAGMVQELDTLQALGLPRPAP GTPASQLLQELHA
Host	Rabbit
Reactivity	Human
Form	Liquid

Purification	Antigen affinity purification
Isotype	IgG
Recommend Usage	Immunohistochemistry (1:200-1:500) Western Blot (1:250-1:500) The optimal working dilution should be determined by the end user.
Storage Buffer	In PBS, pH 7.2 (40% glycerol, 0.02% sodium azide)
Storage Instruction	Store at 4°C. For long term storage store at -20°C. Aliquot to avoid repeated freezing and thawing.
Note	This product contains sodium azide: a POISONOUS AND HAZARDOUS SUBSTANCE which should be handled by trained staff only.

Applications

- Western Blot

Western blot analysis of Lane 1: RT-4, Lane 2: U-251 MG, Lane 3: Human Plasma, Lane 4: Liver, Lane 5: Tonsil with FAM98C polyclonal antibody (Cat # PAB23719) at 1:250-1:500 dilution.

- Immunohistochemistry (Formalin/PFA-fixed paraffin-embedded sections)

Immunohistochemical staining of human colon with FAM98C polyclonal antibody (Cat # PAB23719) shows moderate nuclear positivity in glandular cells at 1:200-1:500 dilution.

Gene Info — FAM98C

Entrez GeneID	147965
Protein Accession#	Q17RN3
Gene Name	FAM98C
Gene Alias	FLJ44669
Gene Description	family with sequence similarity 98, member C
Gene Ontology	Hyperlink
Gene Summary	O
Other Designations	hypothetical protein LOC147965