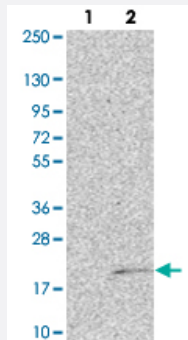


NUTF2 polyclonal antibody

Catalog # PAB23715 Size 100 uL

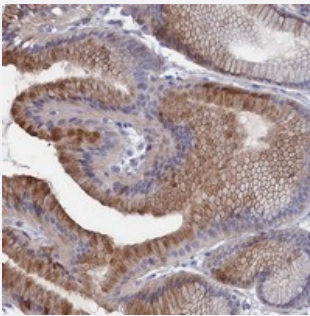
Applications



Western Blot (Transfected lysate)

Western blot analysis of Lane 1: Negative control (vector only transfected HEK293T lysate).

Lane 2: Over-expression lysate (Co-expressed with a C-terminal myc-DDK tag (~3.1 kDa) in mammalian HEK293T cells with NUTF2 polyclonal antibody (Cat # PAB23715).



Immunohistochemistry (Formalin/PFA-fixed paraffin-embedded sections)

Immunohistochemical staining of human stomach with NUTF2 polyclonal antibody (Cat # PAB23715) shows moderate cytoplasmic positivity in glandular cells.

Specification

Product Description	Rabbit polyclonal antibody raised against recombinant NUTF2.
Immunogen	Recombinant protein corresponding to amino acids of human NUTF2.
Sequence	KIQHSITAQDHQPTDSCIISMVVGQLKADEDPIMGFHQMFLKKNINDAWVCTNDMFRLALHNFG
Host	Rabbit
Reactivity	Human
Form	Liquid
Purification	Antigen affinity purification

Isotype	IgG
Recommend Usage	Immunohistochemistry (1:200-1:500) The optimal working dilution should be determined by the end user.
Storage Buffer	In PBS, pH 7.2 (40% glycerol, 0.02% sodium azide)
Storage Instruction	Store at 4°C. For long term storage store at -20°C. Aliquot to avoid repeated freezing and thawing.
Note	This product contains sodium azide: a POISONOUS AND HAZARDOUS SUBSTANCE which should be handled by trained staff only.

Applications

- Western Blot (Transfected lysate)

Western blot analysis of Lane 1: Negative control (vector only transfected HEK293T lysate).

Lane 2: Over-expression lysate (Co-expressed with a C-terminal myc-DDK tag (~3.1 kDa) in mammalian HEK293T cells with NUTF2 polyclonal antibody (Cat # PAB23715).

- Immunohistochemistry (Formalin/PFA-fixed paraffin-embedded sections)

Immunohistochemical staining of human stomach with NUTF2 polyclonal antibody (Cat # PAB23715) shows moderate cytoplasmic positivity in glandular cells.

Gene Info — NUTF2

Entrez GeneID	10204
Protein Accession#	P61970
Gene Name	NUTF2
Gene Alias	NTF2, PP15
Gene Description	nuclear transport factor 2
Omim ID	605813
Gene Ontology	Hyperlink
Gene Summary	The protein encoded by this gene is a cytosolic factor that facilitates protein transport into the nucleus. It interacts with the nuclear pore complex glycoprotein p62. This encoded protein acts at a relative late stage of nuclear protein import, subsequent to the initial docking of nuclear import ligand at the nuclear envelope. It is thought to be part of a multicomponent system of cytosolic factors that assemble at the pore complex during nuclear import. [provided by RefSeq]

Other Designationsplacental protein 15
