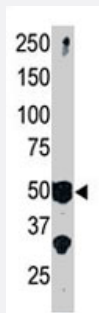


SETD7 polyclonal antibody

Catalog # PAB2369

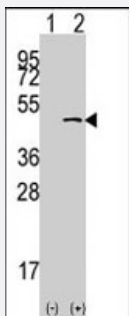
Size 400 uL

Applications



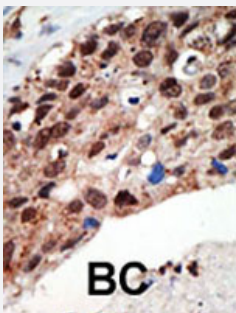
Western Blot (Tissue lysate)

The SETD7 polyclonal antibody (Cat # PAB2369) is used in Western blot to detect SET9 in mouse brain tissue lysate.



Western Blot (Transfected lysate)

293 cell lysates (2 ug/lane) either nontransfected (Lane 1) or transiently transfected with the SETD7 gene (Lane 2) (Origene Technologies).



Immunohistochemistry (Formalin/PFA-fixed paraffin-embedded sections)

Formalin-fixed and paraffin-embedded human cancer tissue reacted with the SETD7 polyclonal antibody (Cat # PAB2369), which was peroxidase-conjugated to the secondary antibody, followed by DAB staining. This data demonstrates the use of this antibody for immunohistochemistry; clinical relevance has not been evaluated. BC = breast carcinoma.

Specification

Product Description

Rabbit polyclonal antibody raised against synthetic peptide of SETD7.

Immunogen

A synthetic peptide (conjugated with KLH) corresponding to internal region of human SETD7.

| | |
|---------------------|--|
| Host | Rabbit |
| Reactivity | Human, Mouse |
| Form | Liquid |
| Purification | Protein G purification |
| Recommend Usage | Western Blot (1:1000) Immunohistochemistry (1:50-100) The optimal working dilution should be determined by the end user. |
| Storage Buffer | In PBS (0.09% sodium azide) |
| Storage Instruction | Store at 4°C. For long term storage store at -20°C. Aliquot to avoid repeated freezing and thawing. |
| Note | This product contains sodium azide: a POISONOUS AND HAZARDOUS SUBSTANCE which should be handled by trained staff only. |

Applications

- Western Blot (Tissue lysate)

The SETD7 polyclonal antibody (Cat # PAB2369) is used in Western blot to detect SET9 in mouse brain tissue lysate.

- Western Blot (Transfected lysate)

293 cell lysates (2 ug/lane) either nontransfected (Lane 1) or transiently transfected with the SETD7 gene (Lane 2) (Origene Technologies).

- Immunohistochemistry (Formalin/PFA-fixed paraffin-embedded sections)

Formalin-fixed and paraffin-embedded human cancer tissue reacted with the SETD7 polyclonal antibody (Cat # PAB2369), which was peroxidase-conjugated to the secondary antibody, followed by DAB staining. This data demonstrates the use of this antibody for immunohistochemistry; clinical relevance has not been evaluated. BC = breast carcinoma.

Gene Info — SETD7

| | |
|--------------------|--|
| Entrez GeneID | 80854 |
| Protein Accession# | Q8WTS6 |
| Gene Name | SETD7 |
| Gene Alias | FLJ21193, KIAA1717, KMT7, SET7, SET7/9, SET9 |
| Gene Description | SET domain containing (lysine methyltransferase) 7 |

| | |
|--------------------|---|
| Omim ID | 606594 |
| Gene Ontology | Hyperlink |
| Other Designations | H3-K4-HMTase SET domain-containing protein 7 histone H3-K4 methyltransferase histone H3-lysine 4-specific methyltransferase |

Publication Reference

- [Human Sin3 deacetylase and trithorax-related Set1/Ash2 histone H3-K4 methyltransferase are tethered together selectively by the cell-proliferation factor HCF-1.](#)

Wysocka J, Myers MP, Laherty CD, Eisenman RN, Herr W.

Genes & Development 2003 Apr; 17(7):896.

- [Mechanism of histone lysine methyl transfer revealed by the structure of SET7/9-AdoMet.](#)

Kwon T, Chang JH, Kwak E, Lee CW, Joachimiak A, Kim YC, Lee J, Cho Y.

The EMBO Journal 2003 Jan; 22(2):292.

- [Structure and catalytic mechanism of the human histone methyltransferase SET7/9.](#)

Xiao B, Jing C, Wilson JR, Walker PA, Vasisht N, Kelly G, Howell S, Taylor IA, Blackburn GM, Gamblin SJ.

Nature 2003 Jan; 421(6923):652.

Pathway

- [Lysine degradation](#)

Disease

- [Tobacco Use Disorder](#)