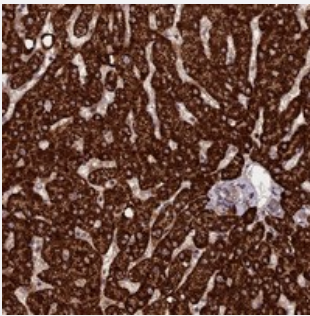


RCCD1 polyclonal antibody

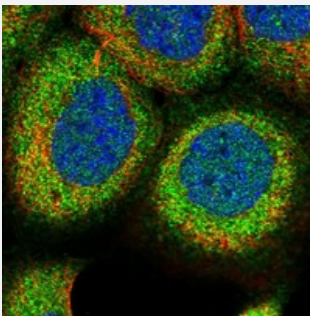
Catalog # PAB23689 Size 100 uL

Applications



Immunohistochemistry (Formalin/PFA-fixed paraffin-embedded sections)

Immunohistochemical staining of human liver with RCCD1 polyclonal antibody (Cat # PAB23689) shows strong cytoplasmic positivity in hepatocytes at 1:50-1:200 dilution.



Immunofluorescence

Immunofluorescent staining of human cell line A-431 with RCCD1 polyclonal antibody (Cat # PAB23689) at 1-4 ug/mL dilution shows positivity in plasma membrane and cytoplasm.

Specification

Product Description	Rabbit polyclonal antibody raised against recombinant RCCD1.
Immunogen	Recombinant protein corresponding to amino acids of human RCCD1.
Sequence	PFIAVQFPALLDLPMGSDAVKASCGSRHTAVVTRTGELYTWGWGKYGQLGHEDTTSLDRPRRV EYFVDKQLQVKAVTCGPWNTYVYAVEKG
Host	Rabbit
Reactivity	Human
Form	Liquid

Purification	Antigen affinity purification
Isotype	IgG
Recommend Usage	Immunohistochemistry (1:50-1:200) Immunofluorescence (1-4 ug/mL) The optimal working dilution should be determined by the end user.
Storage Buffer	In PBS, pH 7.2 (40% glycerol, 0.02% sodium azide)
Storage Instruction	Store at 4°C. For long term storage store at -20°C. Aliquot to avoid repeated freezing and thawing.
Note	This product contains sodium azide: a POISONOUS AND HAZARDOUS SUBSTANCE which should be handled by trained staff only.

Applications

- Immunohistochemistry (Formalin/PFA-fixed paraffin-embedded sections)

Immunohistochemical staining of human liver with RCCD1 polyclonal antibody (Cat # PAB23689) shows strong cytoplasmic positivity in hepatocytes at 1:50-1:200 dilution.

- Immunofluorescence

Immunofluorescent staining of human cell line A-431 with RCCD1 polyclonal antibody (Cat # PAB23689) at 1-4 ug/mL dilution shows positivity in plasma membrane and cytoplasm.

Gene Info — RCCD1

Entrez GeneID	91433
Protein Accession#	A6NED2
Gene Name	RCCD1
Gene Alias	MGC14386
Gene Description	RCC1 domain containing 1
Gene Ontology	Hyperlink
Other Designations	RCC1 domain-containing protein 1