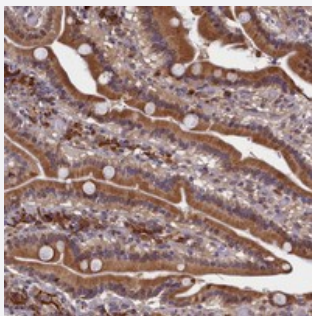


SLC16A14 polyclonal antibody

Catalog # PAB23668 Size 100 uL

Applications



Immunohistochemistry (Formalin/PFA-fixed paraffin-embedded sections)

Immunohistochemical staining of human duodenum with SLC16A14 polyclonal antibody (Cat # PAB23668) shows moderate cytoplasmic positivity in glandular cells.

Specification

Product Description	Rabbit polyclonal antibody raised against recombinant SLC16A14.
Immunogen	Recombinant protein corresponding to amino acids of human SLC16A14.
Sequence	YTSHEDIGYDFEDGPKDKKTLKPHPNIDGG
Host	Rabbit
Reactivity	Human
Form	Liquid
Purification	Antigen affinity purification
Isotype	IgG
Recommend Usage	Immunohistochemistry (1:200-1:500) The optimal working dilution should be determined by the end user.
Storage Buffer	In PBS, pH 7.2 (40% glycerol, 0.02% sodium azide)
Storage Instruction	Store at 4°C. For long term storage store at -20°C. Aliquot to avoid repeated freezing and thawing.

Note

This product contains sodium azide: a POISONOUS AND HAZARDOUS SUBSTANCE which should be handled by trained staff only.

Applications

- Immunohistochemistry (Formalin/PFA-fixed paraffin-embedded sections)

Immunohistochemical staining of human duodenum with SLC16A14 polyclonal antibody (Cat # PAB23668) shows moderate cytoplasmic positivity in glandular cells.

Gene Info — SLC16A14

Entrez GeneID	151473
Protein Accession#	Q7RTX9
Gene Name	SLC16A14
Gene Alias	FLJ30794, MCT14
Gene Description	solute carrier family 16, member 14 (monocarboxylic acid transporter 14)
Gene Ontology	Hyperlink
Gene Summary	O
Other Designations	monocarboxylate transporter 14 solute carrier family 16 (monocarboxylic acid transporters), member 14