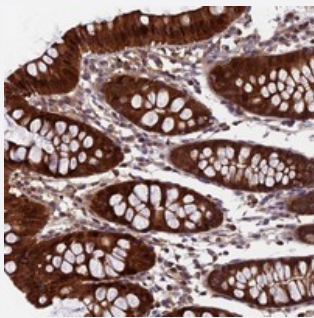


CCDC15 polyclonal antibody

Catalog # PAB23659 Size 100 uL

Applications



Immunohistochemistry (Formalin/PFA-fixed paraffin-embedded sections)

Immunohistochemical staining of human colon with CCDC15 polyclonal antibody (Cat # PAB23659) shows strong cytoplasmic and nuclear positivity in glandular cells.

Specification

Product Description	Rabbit polyclonal antibody raised against recombinant CCDC15.
Immunogen	Recombinant protein corresponding to amino acids of human CCDC15.
Sequence	DKNKPF SRVQKV KFNPLFVLMEEEEQKQLHFEG LQDILPEAQDYFLEAQGD LLETQGDLTG IQS VKPDTQAVEMKVQVT
Host	Rabbit
Reactivity	Human
Form	Liquid
Purification	Antigen affinity purification
Isotype	IgG
Recommend Usage	Immunohistochemistry (1:200-1:500) The optimal working dilution should be determined by the end user.
Storage Buffer	In PBS, pH 7.2 (40% glycerol, 0.02% sodium azide)

Storage Instruction

Store at 4°C. For long term storage store at -20°C.
Aliquot to avoid repeated freezing and thawing.

Note

This product contains sodium azide: a POISONOUS AND HAZARDOUS SUBSTANCE which should be handled by trained staff only.

Applications

- Immunohistochemistry (Formalin/PFA-fixed paraffin-embedded sections)

Immunohistochemical staining of human colon with CCDC15 polyclonal antibody (Cat # PAB23659) shows strong cytoplasmic and nuclear positivity in glandular cells.

Gene Info — CCDC15

Entrez GeneID[80071](#)**Protein Accession#**[Q0P6D6](#)**Gene Name**

CCDC15

Gene Alias

FLJ13215

Gene Description

coiled-coil domain containing 15

Gene Ontology[Hyperlink](#)**Other Designations**

-

Disease

- [Tobacco Use Disorder](#)