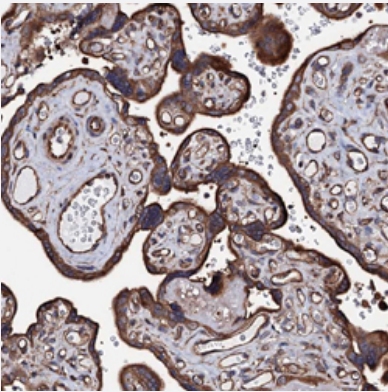


CKAP5 polyclonal antibody

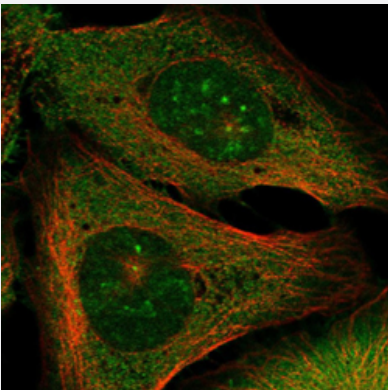
Catalog # PAB23651 Size 100 uL

Applications



Immunohistochemistry

Immunohistochemical staining of human placenta shows strong cytoplasmic positivity in trophoblastic cells.



Immunofluorescence

Immunofluorescent staining of human cell line U-2 OS shows localization to nucleoli, plasma membrane & centrosome.

Specification

Product Description	Rabbit polyclonal antibody raised against recombinant CKAP5.
Immunogen	Recombinant protein corresponding to amino acids of human CKAP5.
Sequence	MSSKLNQARSMMSGHPEAAQMVRREFQLDLDEIENDNGTVRCEMPVLVQHKLDDIFEPVLIPEPKI RAVSPHFDDMHSNTASTINFI
Host	Rabbit
Reactivity	Human

Form	Liquid
Purification	Antigen affinity purification
Isotype	IgG
Recommend Usage	Immunofluorescence (0.25-2 ug/mL) Immunohistochemistry (1:1000-1:2500) The optimal working dilution should be determined by the end user.
Storage Buffer	In PBS, pH 7.2 (40% glycerol, 0.02% sodium azide).
Storage Instruction	Store at 4°C for short term storage. For long term storage store at -20°C. Aliquot to avoid repeated freezing and thawing.
Note	This product contains sodium azide: a POISONOUS AND HAZARDOUS SUBSTANCE which should be handled by trained staff only.

Applications

- Immunohistochemistry

Immunohistochemical staining of human placenta shows strong cytoplasmic positivity in trophoblastic cells.

- Immunofluorescence

Immunofluorescent staining of human cell line U-2 OS shows localization to nucleoli, plasma membrane & centrosome.

Gene Info — CKAP5

Entrez GeneID	9793
Protein Accession#	Q14008
Gene Name	CKAP5
Gene Alias	CHTOG, FLJ35359, KIAA0097, MSPS, TOG, TOGp, ch-TOG
Gene Description	cytoskeleton associated protein 5
Omim ID	611142
Gene Ontology	Hyperlink
Other Designations	colonic and hepatic tumor over-expressed colonic and hepatic tumor over-expressed protein