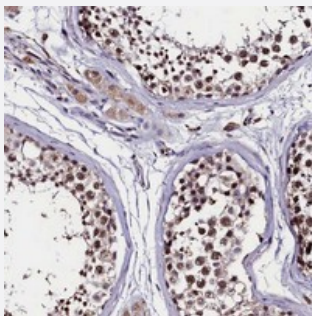


# C11orf49 polyclonal antibody

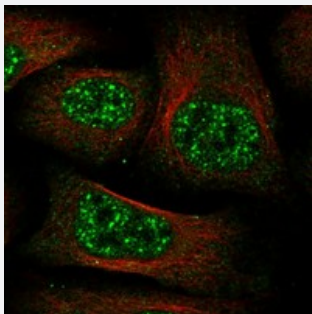
Catalog # PAB23646      Size 100 uL

## Applications



### Immunohistochemistry (Formalin/PFA-fixed paraffin-embedded sections)

Immunohistochemical staining of human testis with C11orf49 polyclonal antibody (Cat # PAB23646) shows strong nuclear positivity in cells in seminiferous tubules.



### Immunofluorescence

Immunofluorescent staining of human cell line U-2 OS with C11orf49 polyclonal antibody (Cat # PAB23646) at 1-4 ug/mL dilution shows positivity in nucleus but not nucleoli.

## Specification

Product Description	Rabbit polyclonal antibody raised against recombinant C11orf49.
Immunogen	Recombinant protein corresponding to amino acids of human C11orf49.
Sequence	VIVPTSSSGQHRQRPALGGAGTLEGVEASLFYQCLENLCDRHKYSCPPPALVKEALSNVQRLTFY GFLMALSKHRGINQAL
Host	Rabbit
Reactivity	Human
Form	Liquid

Purification	Antigen affinity purification
Isotype	IgG
Recommend Usage	Immunohistochemistry (1:10-1:20) Immunofluorescence (1-4 ug/mL) The optimal working dilution should be determined by the end user.
Storage Buffer	In PBS, pH 7.2 (40% glycerol, 0.02% sodium azide)
Storage Instruction	Store at 4°C. For long term storage store at -20°C. Aliquot to avoid repeated freezing and thawing.
Note	This product contains sodium azide: a POISONOUS AND HAZARDOUS SUBSTANCE which should be handled by trained staff only.

## Applications

- Immunohistochemistry (Formalin/PFA-fixed paraffin-embedded sections)

Immunohistochemical staining of human testis with C11orf49 polyclonal antibody (Cat # PAB23646) shows strong nuclear positivity in cells in seminiferous tubules.

- Immunofluorescence

Immunofluorescent staining of human cell line U-2 OS with C11orf49 polyclonal antibody (Cat # PAB23646) at 1-4 ug/mL dilution shows positivity in nucleus but not nucleoli.

## Gene Info — C11orf49

Entrez GeneID	<a href="#">79096</a>
Protein Accession#	<a href="#">Q9H6J7</a>
Gene Name	C11orf49
Gene Alias	FLJ22210, MGC4707
Gene Description	chromosome 11 open reading frame 49
Gene Ontology	<a href="#">Hyperlink</a>
Other Designations	hypothetical protein LOC79096

## Disease

- [Tobacco Use Disorder](#)