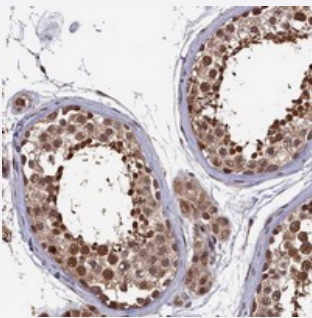


# CLPX polyclonal antibody

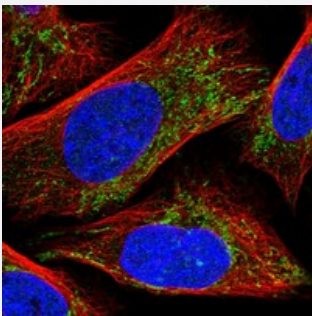
Catalog # PAB23645      Size 100 uL

## Applications



### Immunohistochemistry (Formalin/PFA-fixed paraffin-embedded sections)

Immunohistochemical staining of human testis with CLPX polyclonal antibody (Cat # PAB23645) shows strong cytoplasmic and nuclear positivity in cells in seminiferous ducts.



### Immunofluorescence

Immunofluorescent staining of human cell line U-2 OS with CLPX polyclonal antibody (Cat # PAB23645) at 1-4 ug/mL dilution shows positivity in mitochondria.

## Specification

|                     |  |
|---------------------|--|
| Product Description | Rabbit polyclonal antibody raised against recombinant CLPX.  |
| Immunogen           | Recombinant protein corresponding to amino acids of human CLPX.                                    |
| Sequence            | GRLGTFETQILQRAPLRSFTETPAYFASKDGISKDGSGDGNKKSASEGSSKKSGSGNSGKGGNQ<br>LRCPKCGDLCTHVETVFSSTRFVKCEKCHH |
| Host                | Rabbit   |
| Reactivity          | Human  |
| Form                | Liquid   |

|                     |   |
|---------------------|---|
| Purification        | Antigen affinity purification   |
| Isotype             | IgG   |
| Recommend Usage     | Immunohistochemistry (1:50-1:200)<br>Immunofluorescence (1-4 ug/mL)<br>The optimal working dilution should be determined by the end user. |
| Storage Buffer      | In PBS, pH 7.2 (40% glycerol, 0.02% sodium azide)   |
| Storage Instruction | Store at 4°C. For long term storage store at -20°C.<br>Aliquot to avoid repeated freezing and thawing.                                    |
| Note                | This product contains sodium azide: a POISONOUS AND HAZARDOUS SUBSTANCE which should be handled by trained staff only.                    |

## Applications

- Immunohistochemistry (Formalin/PFA-fixed paraffin-embedded sections)

Immunohistochemical staining of human testis with CLPX polyclonal antibody (Cat # PAB23645) shows strong cytoplasmic and nuclear positivity in cells in seminiferous ducts.

- Immunofluorescence

Immunofluorescent staining of human cell line U-2 OS with CLPX polyclonal antibody (Cat # PAB23645) at 1-4 ug/mL dilution shows positivity in mitochondria.

## Gene Info — CLPX

|                    |  |
|--------------------|--|
| Entrez GeneID      | <a href="#">10845</a>  |
| Protein Accession# | <a href="#">O76031</a>   |
| Gene Name          | CLPX   |
| Gene Alias         | -  |
| Gene Description   | ClpX caseinolytic peptidase X homolog (E. coli)                                |
| Gene Ontology      | <a href="#">Hyperlink</a>  |
| Other Designations | ClpX caseinolytic protease X homolog energy-dependent regulator of proteolysis |