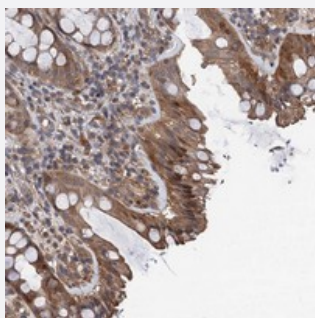


TMEM39B polyclonal antibody

Catalog # PAB23631 Size 100 uL

Applications



Immunohistochemistry (Formalin/PFA-fixed paraffin-embedded sections)

Immunohistochemical staining of human rectum with TMEM39B polyclonal antibody (Cat # PAB23631) shows moderate cytoplasmic and nuclear positivity in glandular cells at 1:20-1:50 dilution.

Specification

Product Description	Rabbit polyclonal antibody raised against recombinant TMEM39B.
Immunogen	Recombinant protein corresponding to amino acids of human TMEM39B.
Sequence	LRKTSLFNHMASMGPREAVSGLAKSRDYLLTLRETWKQHTRQLYGPDAMPTHACCLSPSLIRSE VEFLKMDF
Host	Rabbit
Reactivity	Human
Form	Liquid
Purification	Antigen affinity purification
Isotype	IgG
Recommend Usage	Immunohistochemistry (1:20-1:50) The optimal working dilution should be determined by the end user.
Storage Buffer	In PBS, pH 7.2 (40% glycerol, 0.02% sodium azide)

Storage Instruction

Store at 4°C. For long term storage store at -20°C.
Aliquot to avoid repeated freezing and thawing.

Note

This product contains sodium azide: a POISONOUS AND HAZARDOUS SUBSTANCE which should be handled by trained staff only.

Applications

- Immunohistochemistry (Formalin/PFA-fixed paraffin-embedded sections)

Immunohistochemical staining of human rectum with TMEM39B polyclonal antibody (Cat # PAB23631) shows moderate cytoplasmic and nuclear positivity in glandular cells at 1:20-1:50 dilution.

Gene Info — TMEM39B

Entrez GeneID[55116](#)**Protein Accession#**[Q9GZU3](#)**Gene Name**

TMEM39B

Gene Alias

FLJ10315

Gene Description

transmembrane protein 39B

Gene Ontology[Hyperlink](#)**Other Designations**

-