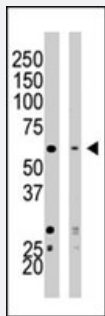


# SETD8 polyclonal antibody

Catalog # PAB2363

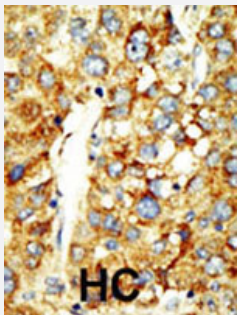
Size 400 uL

## Applications



### Western Blot (Cell lysate)

Western blot analysis of SETD8 polyclonal antibody (Cat # PAB2363) in HeLa cell lysate (Lane 1) and NIH/3T3 cell lysate (Lane 2). SETD8 (arrow) was detected using purified polyclonal antibody. Secondary HRP-anti-rabbit was used for signal visualization with chemiluminescence.



### Immunohistochemistry (Formalin/PFA-fixed paraffin-embedded sections)

Formalin-fixed and paraffin-embedded human hepatocellular carcinoma tissue reacted with the SETD8 polyclonal antibody (Cat # PAB2363), which was peroxidase-conjugated to the secondary antibody, followed by DAB staining. This data demonstrates the use of this antibody for immunohistochemistry; clinical relevance has not been evaluated. HC = hepatocarcinoma.

## Specification

<b>Product Description</b>	Rabbit polyclonal antibody raised against synthetic peptide of SETD8.
<b>Immunogen</b>	A synthetic peptide (conjugated with KLH) corresponding to amino acids 25-53 at N-terminus of human SETD8.
<b>Host</b>	Rabbit
<b>Reactivity</b>	Human, Mouse
<b>Form</b>	Liquid
<b>Purification</b>	Saturated Ammonium Sulfate (SAS) precipitation

<b>Recommend Usage</b>	Immunohistochemistry (1:50-100) Western Blot (1:1000) The optimal working dilution should be determined by the end user.
<b>Storage Buffer</b>	In PBS (0.09% sodium azide).
<b>Storage Instruction</b>	Store at 2-8°C for up to 2 weeks. For long term storage store at -20°C. Aliquot to avoid repeated freezing and thawing.
<b>Note</b>	This product contains sodium azide: a POISONOUS AND HAZARDOUS SUBSTANCE which should be handled by trained staff only.

## Applications

- Western Blot (Cell lysate)

Western blot analysis of SETD8 polyclonal antibody (Cat # PAB2363) in HeLa cell lysate (Lane 1) and NIH/3T3 cell lysate (Lane 2). SET07 (arrow) was detected using purified polyclonal antibody. Secondary HRP-anti-rabbit was used for signal visualization with chemiluminescence.

- Immunohistochemistry (Formalin/PFA-fixed paraffin-embedded sections)

Formalin-fixed and paraffin-embedded human hepatocellular carcinoma tissue reacted with the SETD8 polyclonal antibody (Cat # PAB2363), which was peroxidase-conjugated to the secondary antibody, followed by DAB staining. This data demonstrates the use of this antibody for immunohistochemistry; clinical relevance has not been evaluated. HC = hepatocarcinoma.

## Gene Info — SETD8

<b>Entrez GeneID</b>	<a href="#">387893</a>
<b>Protein Accession#</b>	<a href="#">AAF97812;Q9NQR1</a>
<b>Gene Name</b>	SETD8
<b>Gene Alias</b>	KMT5A, PR-Set7, SET07, SET8
<b>Gene Description</b>	SET domain containing (lysine methyltransferase) 8
<b>Omim ID</b>	<a href="#">607240</a>
<b>Gene Ontology</b>	<a href="#">Hyperlink</a>
<b>Other Designations</b>	H4-K20-specific histone methyltransferase PR/SET domain containing protein 8 SET domain-containing protein 8

## Publication Reference

- [Purification and functional characterization of SET8, a nucleosomal histone H4-lysine 20-specific methyltransferase.](#)

Fang J, Feng Q, Ketel CS, Wang H, Cao R, Xia L, Erdjument-Bromage H, Tempst P, Simon JA, Zhang Y.

Current Biology 2002 Jul; 12(13):1086.

Application: WB-Re, Recombinant protein

- [PR-Set7 is a nucleosome-specific methyltransferase that modifies lysine 20 of histone H4 and is associated with silent chromatin.](#)

Nishioka K, Rice JC, Sarma K, Erdjument-Bromage H, Werner J, Wang Y, Chuikov S, Valenzuela P, Tempst P, Steward R, Lis JT, Allis CD, Reinberg D.

Molecular Cell 2002 Jun; 9(6):1201.

## Pathway

- [Lysine degradation](#)

## Disease

- [Breast Neoplasms](#)
- [Genetic Predisposition to Disease](#)