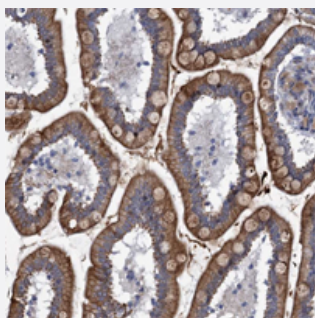


FAM214A polyclonal antibody

Catalog # PAB23627 Size 100 uL

Applications



Immunohistochemistry (Formalin/PFA-fixed paraffin-embedded sections)

Immunohistochemical staining of human cerebellum with FAM214A polyclonal antibody (Cat # PAB23627) shows strong cytoplasmic positivity in Purkinje cells at 1:10-1:20 dilution.

Specification

Product Description	Rabbit polyclonal antibody raised against recombinant FAM214A.
Immunogen	Recombinant protein corresponding to amino acids of human FAM214A.
Sequence	EVLRTTLKHSNVWRKHNHFSLDGTSTRAFHPQTGLPLLSSPVPQRKTQSGCFDLDSSLLHLKSFSSRSPRPCLNIEDDPDIHEKPFLSSSAPPI
Host	Rabbit
Reactivity	Human
Form	Liquid
Purification	Antigen affinity purification
Isotype	IgG
Recommend Usage	Immunohistochemistry (1:10-1:20) The optimal working dilution should be determined by the end user.
Storage Buffer	In PBS, pH 7.2 (40% glycerol, 0.02% sodium azide)

Storage Instruction

Store at 4°C. For long term storage store at -20°C.
Aliquot to avoid repeated freezing and thawing.

Note

This product contains sodium azide: a POISONOUS AND HAZARDOUS SUBSTANCE which should be handled by trained staff only.

Applications

- Immunohistochemistry (Formalin/PFA-fixed paraffin-embedded sections)

Immunohistochemical staining of human cerebellum with FAM214A polyclonal antibody (Cat # PAB23627) shows strong cytoplasmic positivity in Purkinje cells at 1:10-1:20 dilution.

Gene Info — FAM214A

Entrez GeneID[56204](#)**Protein Accession#**[Q32MH5](#)**Gene Name**

FAM214A

Gene Alias

KIAA1370

Gene Description

family with sequence similarity 214, member A

Gene Ontology[Hyperlink](#)**Gene Summary**

protein FAM214A

Other Designations

protein FAM214A