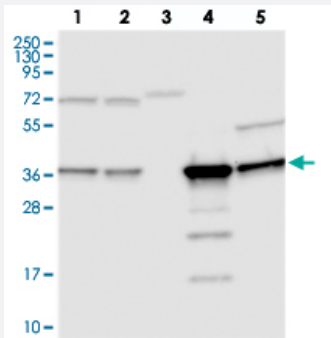


# C11orf54 polyclonal antibody

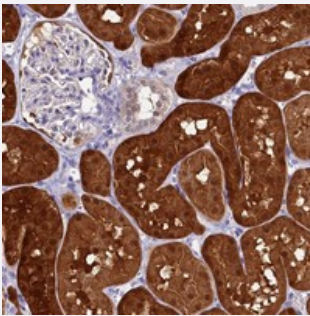
Catalog # PAB23620      Size 100 uL

## Applications



### Western Blot

Western blot analysis of Lane 1: RT-4, Lane 2: U-251 MG, Lane 3: Human Plasma, Lane 4: Liver, Lane 5: Tonsil with C11orf54 polyclonal antibody (Cat # PAB23620).



### Immunohistochemistry (Formalin/PFA-fixed paraffin-embedded sections)

Immunohistochemical staining of human kidney with C11orf54 polyclonal antibody (Cat # PAB23620) shows strong cytoplasmic and nuclear positivity in cells in tubules.

## Specification

Product Description	Rabbit polyclonal antibody raised against recombinant C11orf54.
Immunogen	Recombinant protein corresponding to amino acids of human C11orf54.
Sequence	MACAEFSFHVPSLEELAGVMQKGLKDNFADVQVSVDPCDLTKEPFTFPVKGICGKTRIA EVGG VPYLLPLVNQKKVYDLN KIAKEIKLPGAFILGAGAG
Host	Rabbit
Reactivity	Human
Form	Liquid

Purification	Antigen affinity purification
Isotype	IgG
Recommend Usage	Immunohistochemistry (1:2500-1:5000) Western Blot (1:250-1:500) The optimal working dilution should be determined by the end user.
Storage Buffer	In PBS, pH 7.2 (40% glycerol, 0.02% sodium azide)
Storage Instruction	Store at 4°C. For long term storage store at -20°C. Aliquot to avoid repeated freezing and thawing.
Note	This product contains sodium azide: a POISONOUS AND HAZARDOUS SUBSTANCE which should be handled by trained staff only.

## Applications

- Western Blot

Western blot analysis of Lane 1: RT-4, Lane 2: U-251 MG, Lane 3: Human Plasma, Lane 4: Liver, Lane 5: Tonsil with C11orf54 polyclonal antibody (Cat # PAB23620).

- Immunohistochemistry (Formalin/PFA-fixed paraffin-embedded sections)

Immunohistochemical staining of human kidney with C11orf54 polyclonal antibody (Cat # PAB23620) shows strong cytoplasmic and nuclear positivity in cells in tubules.

## Gene Info — C11orf54

Entrez GeneID	<a href="#">28970</a>
Protein Accession#	<a href="#">Q9H0W9</a>
Gene Name	C11orf54
Gene Alias	PTD012
Gene Description	chromosome 11 open reading frame 54
Gene Ontology	<a href="#">Hyperlink</a>
Other Designations	LP4947 hypothetical protein LOC28970