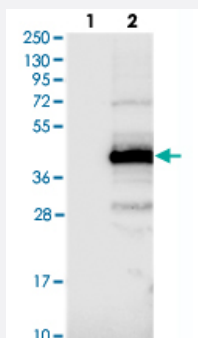


C11orf49 polyclonal antibody

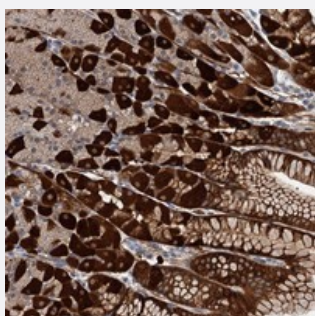
Catalog # PAB23617 Size 100 uL

Applications



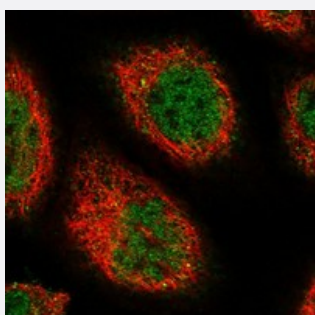
Western Blot (Transfected lysate)

Western blot analysis of Lane 1: Negative control (vector only transfected HEK293T lysate), Lane 2: Over-expression Lysate (Co-expressed with a C-terminal myc-DDK tag (~3.1 kDa) in mammalian HEK293T cells) with C11orf49 polyclonal antibody (Cat # PAB23617) at 1:250-1:500 dilution.



Immunohistochemistry (Formalin/PFA-fixed paraffin-embedded sections)

Immunohistochemical staining of human stomach with C11orf49 polyclonal antibody (Cat # PAB23617) shows strong cytoplasmic positivity in glandular cells at 1:50-1:200 dilution.



Immunofluorescence

Immunofluorescent staining of human cell line A-431 with C11orf49 polyclonal antibody (Cat # PAB23617) at 1-4 ug/mL dilution shows positivity in nucleus but not nucleoli.

Specification

Product Description

Rabbit polyclonal antibody raised against recombinant C11orf49.

Immunogen

Recombinant protein corresponding to amino acids of human C11orf49.

Sequence	LGALPDKGDLMHDPAMDEELERLLAQVPGLVNSVTASPEASCLPSRTPPRVGSPWRPLHHSRK VDGESDGSSTEETDESET
Host	Rabbit
Reactivity	Human
Form	Liquid
Purification	Antigen affinity purification
Isotype	IgG
Recommend Usage	Immunohistochemistry (1:50-1:200) Western Blot (1:250-1:500) Immunofluorescence (1-4 ug/mL) The optimal working dilution should be determined by the end user.
Storage Buffer	In PBS, pH 7.2 (40% glycerol, 0.02% sodium azide)
Storage Instruction	Store at 4°C. For long term storage store at -20°C. Aliquot to avoid repeated freezing and thawing.
Note	This product contains sodium azide: a POISONOUS AND HAZARDOUS SUBSTANCE which should be handled by trained staff only.

Applications

- Western Blot (Transfected lysate)

Western blot analysis of Lane 1: Negative control (vector only transfected HEK293T lysate), Lane 2: Over-expression Lysate (Co-expressed with a C-terminal myc-DDK tag (~3.1 kDa) in mammalian HEK293T cells) with C11orf49 polyclonal antibody (Cat # PAB23617) at 1:250-1:500 dilution.

- Immunohistochemistry (Formalin/PFA-fixed paraffin-embedded sections)

Immunohistochemical staining of human stomach with C11orf49 polyclonal antibody (Cat # PAB23617) shows strong cytoplasmic positivity in glandular cells at 1:50-1:200 dilution.

- Immunofluorescence

Immunofluorescent staining of human cell line A-431 with C11orf49 polyclonal antibody (Cat # PAB23617) at 1-4 ug/mL dilution shows positivity in nucleus but not nucleoli.

Gene Info — C11orf49

Entrez GeneID [79096](#)

Protein Accession#	Q9H6J7
Gene Name	C11orf49
Gene Alias	FLJ22210, MGC4707
Gene Description	chromosome 11 open reading frame 49
Gene Ontology	Hyperlink
Other Designations	hypothetical protein LOC79096

Disease

- [Tobacco Use Disorder](#)