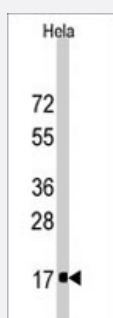


# IFITM3 polyclonal antibody

Catalog # PAB2361

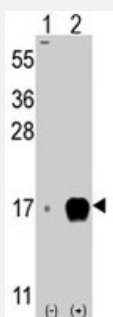
Size 400 uL

## Applications



### Western Blot (Cell lysate)

Western blot analysis of IFITM3 polyclonal antibody (Cat # PAB2361) in HeLa cell line lysates (35 ug/lane). IFITM3 (arrow) was detected using the purified polyclonal antibody.



### Western Blot (Transfected lysate)

Western blot analysis of IFITM3 (arrow) using rabbit IFITM3 polyclonal antibody (Cat # PAB2361). 293 cell lysates (2 ug/lane) either nontransfected (Lane 1) or transiently transfected with the IFITM3 gene (Lane 2) (Origene Technologies).

## Specification

### Product Description

Rabbit polyclonal antibody raised against synthetic peptide of IFITM3.

### Immunogen

A synthetic peptide (conjugated with KLH) corresponding to internal region of human IFITM3.

### Host

Rabbit

### Reactivity

Human

### Form

Liquid

### Purification

Ammonium sulfate precipitation

<b>Recommend Usage</b>	Western Blot (1:1000) The optimal working dilution should be determined by the end user.
<b>Storage Buffer</b>	In PBS (0.09% sodium azide)
<b>Storage Instruction</b>	Store at 4°C. For long term storage store at -20°C. Aliquot to avoid repeated freezing and thawing.
<b>Note</b>	This product contains sodium azide: a POISONOUS AND HAZARDOUS SUBSTANCE which should be handled by trained staff only.

## Applications

- Western Blot (Cell lysate)

Western blot analysis of IFITM3 polyclonal antibody (Cat # PAB2361) in HeLa cell line lysates (35 ug/lane). IFITM3 (arrow) was detected using the purified polyclonal antibody.

- Western Blot (Transfected lysate)

Western blot analysis of IFITM3 (arrow) using rabbit IFITM3 polyclonal antibody (Cat # PAB2361). 293 cell lysates (2 ug/lane) either nontransfected (Lane 1) or transiently transfected with the IFITM3 gene (Lane 2) (Origene Technologies).

## Gene Info — IFITM3

<b>Entrez GeneID</b>	<a href="#">10410</a>
<b>Protein Accession#</b>	<a href="#">NP_066362;Q01628</a>
<b>Gene Name</b>	IFITM3
<b>Gene Alias</b>	1-8U, IP15
<b>Gene Description</b>	interferon induced transmembrane protein 3 (1-8U)
<b>Omim ID</b>	<a href="#">605579</a>
<b>Gene Ontology</b>	<a href="#">Hyperlink</a>
<b>Other Designations</b>	interferon-induced transmembrane protein 3 (1-8U) interferon-inducible

## Publication Reference

- [IFITM/Mil/fragilis family proteins IFITM1 and IFITM3 play distinct roles in mouse primordial germ cell homing and repulsion.](#)

Tanaka SS, Yamaguchi YL, Tsoi B, Lickert H, Tam PP.

Developmental Cell 2005 Dec; 9(6):745.

## Disease

- [Colitis](#)
- [Genetic Predisposition to Disease](#)