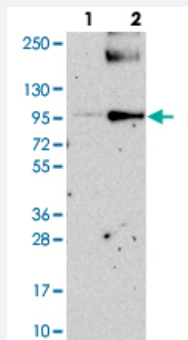


PIGN polyclonal antibody

Catalog # PAB23600 Size 100 uL

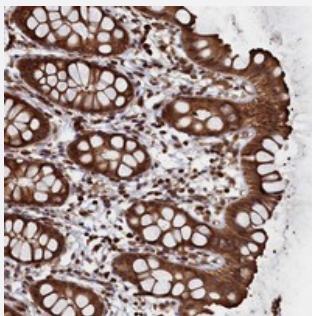
Applications



Western Blot (Transfected lysate)

Western blot analysis of Lane 1: Negative control (vector only transfected HEK293T lysate).

Lane 2: Over-expression lysate (Co-expressed with a C-terminal myc-DDK tag (~3.1 kDa) in mammalian HEK293T cells with PIGN polyclonal antibody (Cat # PAB23600).



Immunohistochemistry (Formalin/PFA-fixed paraffin-embedded sections)

Immunohistochemical staining of human rectum with PIGN polyclonal antibody (Cat # PAB23600) shows strong cytoplasmic positivity in glandular cells at 1:50-1:200 dilution.

Specification

Product Description	Rabbit polyclonal antibody raised against recombinant PIGN.
Immunogen	Recombinant protein corresponding to amino acids of human PIGN.
Sequence	SWGISHTRVPTESRPGHVALIAGFYEDVSAVAKGWKENPVEFDSLNFESKYTWSWGSPDILPMF AKGASGDHVTYSYDAKREDFGAQDATKLDTW
Host	Rabbit
Reactivity	Human
Form	Liquid

Purification	Antigen affinity purification
Isotype	IgG
Recommend Usage	Immunohistochemistry (1:50-1:200) The optimal working dilution should be determined by the end user.
Storage Buffer	In PBS, pH 7.2 (40% glycerol, 0.02% sodium azide)
Storage Instruction	Store at 4°C. For long term storage store at -20°C. Aliquot to avoid repeated freezing and thawing.
Note	This product contains sodium azide: a POISONOUS AND HAZARDOUS SUBSTANCE which should be handled by trained staff only.

Applications

- Western Blot (Transfected lysate)

Western blot analysis of Lane 1: Negative control (vector only transfected HEK293T lysate).

Lane 2: Over-expression lysate (Co-expressed with a C-terminal myc-DDK tag (~3.1 kDa) in mammalian HEK293T cells with PIGN polyclonal antibody (Cat # PAB23600).

- Immunohistochemistry (Formalin/PFA-fixed paraffin-embedded sections)

Immunohistochemical staining of human rectum with PIGN polyclonal antibody (Cat # PAB23600) shows strong cytoplasmic positivity in glandular cells at 1:50-1:200 dilution.

Gene Info — PIGN

Entrez GeneID	23556
Protein Accession#	O95427
Gene Name	PIGN
Gene Alias	MCD4, MDC4, MGC26427, PIG-N
Gene Description	phosphatidylinositol glycan anchor biosynthesis, class N
Omim ID	606097
Gene Ontology	Hyperlink

Gene Summary

This gene encodes a protein that is involved in glycosylphosphatidylinositol (GPI)-anchor biosynthesis. The GPI-anchor is a glycolipid found on many blood cells and serves to anchor proteins to the cell surface. This protein is expressed in the endoplasmic reticulum and transfers phosphoethanolamine (EtNP) to the first mannose of the GPI anchor. Two alternatively spliced variants, which encode an identical isoform, have been reported. [provided by RefSeq]

Other Designations

-

Pathway

- [Glycosylphosphatidylinositol\(GPI\)-anchor biosynthesis](#)
- [Metabolic pathways](#)

Disease

- [Tobacco Use Disorder](#)