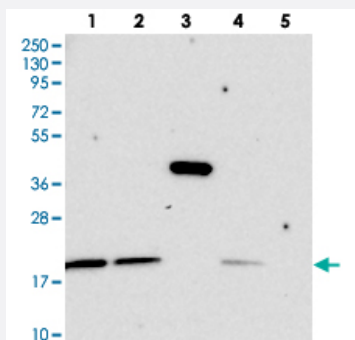


# C11orf57 polyclonal antibody

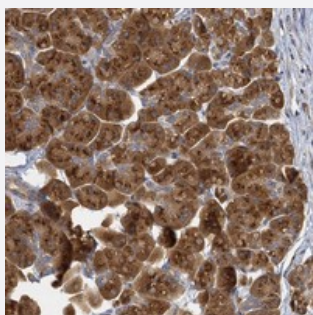
Catalog # PAB23593      Size 100 uL

## Applications



### Western Blot

Western blot analysis of C11orf57 polyclonal antibody (Cat # PAB23593). Lane 1: RT-4, Lane 2: U-251 MG, Lane 3: human plasma, Lane 4: liver, Lane 5: tonsil.



### Immunohistochemistry (Formalin/PFA-fixed paraffin-embedded sections)

Immunohistochemical staining of human pancreas with C11orf57 polyclonal antibody (Cat # PAB23593) shows strong cytoplasmic positivity in exocrine glandular cells at 1:200-1:500 dilution.

## Specification

<b>Product Description</b>	Rabbit polyclonal antibody raised against recombinant C11orf57.
<b>Immunogen</b>	Recombinant protein corresponding to amino acids of human C11orf57.
<b>Sequence</b>	SGTLEDDFLKAKSWNKKFYDYEANMPDRWGHSGYKELYPEEFETDSSDQQDITNGKKTSPQVK SSTHESRKHKSKKSH
<b>Host</b>	Rabbit
<b>Reactivity</b>	Human
<b>Form</b>	Liquid

Purification	Antigen affinity purification
Isotype	IgG
Recommend Usage	Immunohistochemistry (1:200-1:500) Western Blot (1:250-1:500) The optimal working dilution should be determined by the end user.
Storage Buffer	In PBS, pH 7.2 (40% glycerol, 0.02% sodium azide)
Storage Instruction	Store at 4°C. For long term storage store at -20°C. Aliquot to avoid repeated freezing and thawing.
Note	This product contains sodium azide: a POISONOUS AND HAZARDOUS SUBSTANCE which should be handled by trained staff only.

## Applications

- Western Blot

Western blot analysis of C11orf57 polyclonal antibody (Cat # PAB23593).  
Lane 1: RT-4, Lane 2: U-251 MG, Lane 3: human plasma, Lane 4: liver, Lane 5: tonsil.

- Immunohistochemistry (Formalin/PFA-fixed paraffin-embedded sections)

Immunohistochemical staining of human pancreas with C11orf57 polyclonal antibody (Cat # PAB23593) shows strong cytoplasmic positivity in exocrine glandular cells at 1:200-1:500 dilution.

## Gene Info — C11orf57

Entrez GeneID	<a href="#">55216</a>
Protein Accession#	<a href="#">Q6ZUT1</a>
Gene Name	C11orf57
Gene Alias	FLJ10726
Gene Description	chromosome 11 open reading frame 57
Gene Ontology	<a href="#">Hyperlink</a>
Other Designations	OTTHUMP00000196623 OTTHUMP00000196624 hypothetical protein LOC55216