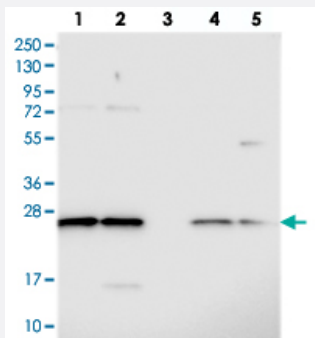


C14orf166 polyclonal antibody

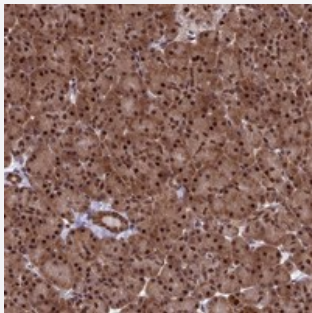
Catalog # PAB23585 Size 100 uL

Applications



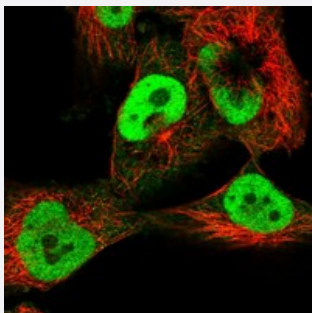
Western Blot

Western blot analysis of Lane 1: RT-4, Lane 2: U-251 MG, Lane 3: Human Plasma, Lane 4: Liver, Lane 5: Tonsil with C14orf166 polyclonal antibody (Cat # PAB23585) at 1:250-1:500 dilution.



Immunohistochemistry (Formalin/PFA-fixed paraffin-embedded sections)

Immunohistochemical staining of human pancreas with C14orf166 polyclonal antibody (Cat # PAB23585) shows strong nuclear and cytoplasmic positivity in exocrine glandular cells at 1:200-1:500 dilution.



Immunofluorescence

Immunofluorescent staining of human cell line U-251 MG with C14orf166 polyclonal antibody (Cat # PAB23585) at 1-4 ug/mL dilution shows positivity in nucleus but not nucleoli.

Specification

Product Description

Rabbit polyclonal antibody raised against recombinant C14orf166.

Immunogen

Recombinant protein corresponding to amino acids of human C14orf166.

Sequence	ALDYHNPAGFNCKDETEFRNFWLEDQKIRHYKIEDRGNLRNIHSSDWPKFFEKYLRDVNCPFKI QDRQEAI DWLLGLAVRLEYGDNAEKYKDLVPDNS
Host	Rabbit
Reactivity	Human
Form	Liquid
Purification	Antigen affinity purification
Isotype	IgG
Recommend Usage	Immunohistochemistry (1:200-1:500) Western Blot (1:250-1:500) Immunofluorescence (1-4 ug/mL) The optimal working dilution should be determined by the end user.
Storage Buffer	In PBS, pH 7.2 (40% glycerol, 0.02% sodium azide)
Storage Instruction	Store at 4°C. For long term storage store at -20°C. Aliquot to avoid repeated freezing and thawing.
Note	This product contains sodium azide: a POISONOUS AND HAZARDOUS SUBSTANCE which should be handled by trained staff only.

Applications

- Western Blot

Western blot analysis of Lane 1: RT-4, Lane 2: U-251 MG, Lane 3: Human Plasma, Lane 4: Liver, Lane 5: Tonsil with C14orf166 polyclonal antibody (Cat # PAB23585) at 1:250-1:500 dilution.

- Immunohistochemistry (Formalin/PFA-fixed paraffin-embedded sections)

Immunohistochemical staining of human pancreas with C14orf166 polyclonal antibody (Cat # PAB23585) shows strong nuclear and cytoplasmic positivity in exocrine glandular cells at 1:200-1:500 dilution.

- Immunofluorescence

Immunofluorescent staining of human cell line U-251 MG with C14orf166 polyclonal antibody (Cat # PAB23585) at 1-4 ug/mL dilution shows positivity in nucleus but not nucleoli.

Gene Info — C14orf166

Entrez GeneID [51637](#)

Protein Accession# [Q9Y224](#)

Gene Name	C14orf166
Gene Alias	CGI-99, CGI99, CLE, CLE7, LCRP369, RLLM1
Gene Description	chromosome 14 open reading frame 166
Omim ID	610858
Gene Ontology	Hyperlink
Other Designations	OTTHUMP00000178984 RLL motif containing 1 homeobox prox 1