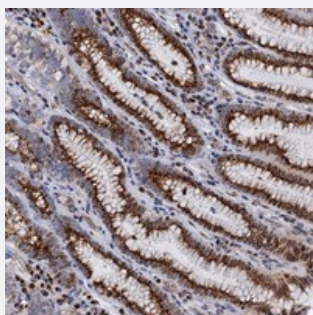


# THAP2 polyclonal antibody

Catalog # PAB23580      Size 100 uL

## Applications



### Immunohistochemistry (Formalin/PFA-fixed paraffin-embedded sections)

Immunohistochemical staining of human stomach with THAP2 polyclonal antibody (Cat # PAB23580) shows strong granular cytoplasmic positivity in glandular cells.

## Specification

Product Description	Rabbit polyclonal antibody raised against recombinant THAP2.
Immunogen	Recombinant protein corresponding to amino acids of human THAP2.
Sequence	KSNISSQQVLLLEHSYAFRNPMEAKKRIIKLEKEIASLRRKMKTCLQKERRATRRWIKATCLVKNLEA NSVLPGTSEHMLPTALSSLPLED
Host	Rabbit
Reactivity	Human
Form	Liquid
Purification	Antigen affinity purification
Isotype	IgG
Recommend Usage	Immunohistochemistry (1:20-1:50) The optimal working dilution should be determined by the end user.
Storage Buffer	In PBS, pH 7.2 (40% glycerol, 0.02% sodium azide)

**Storage Instruction**

Store at 4°C. For long term storage store at -20°C.  
Aliquot to avoid repeated freezing and thawing.

**Note**

This product contains sodium azide: a POISONOUS AND HAZARDOUS SUBSTANCE which should be handled by trained staff only.

## Applications

- Immunohistochemistry (Formalin/PFA-fixed paraffin-embedded sections)

Immunohistochemical staining of human stomach with THAP2 polyclonal antibody (Cat # PAB23580) shows strong granular cytoplasmic positivity in glandular cells.

## Gene Info — THAP2

**Entrez GeneID** [83591](#)

**Protein Accession#** [Q9H0W7](#)

**Gene Name** THAP2

**Gene Alias** DKFZp564I0422

**Gene Description** THAP domain containing, apoptosis associated protein 2

**Gene Ontology** [Hyperlink](#)

**Gene Summary** O

**Other Designations** -