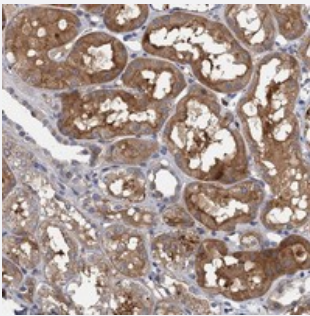


# TPCN1 polyclonal antibody

Catalog # PAB23577      Size 100 uL

## Applications



### Immunohistochemistry (Formalin/PFA-fixed paraffin-embedded sections)

Immunohistochemical staining of human kidney with TPCN1 polyclonal antibody (Cat # PAB23577) shows moderate cytoplasmic positivity in cells in renal tubules at 1:20-1:50 dilution.

## Specification

<b>Product Description</b>	Rabbit polyclonal antibody raised against recombinant TPCN1.
<b>Immunogen</b>	Recombinant protein corresponding to amino acids of human TPCN1.
<b>Sequence</b>	FKSLLHKKRTAIQHAYRLLISQRRPAGISYRQFEGLMRFYKPRMSARERYLTFKALNQNNTPLLSLKDFYDIYEVAALKWKAKKNREHWFDLPRT
<b>Host</b>	Rabbit
<b>Reactivity</b>	Human
<b>Form</b>	Liquid
<b>Purification</b>	Antigen affinity purification
<b>Isotype</b>	IgG
<b>Recommend Usage</b>	Immunohistochemistry (1:20-1:50) The optimal working dilution should be determined by the end user.
<b>Storage Buffer</b>	In PBS, pH 7.2 (40% glycerol, 0.02% sodium azide)

**Storage Instruction**

Store at 4°C. For long term storage store at -20°C.  
Aliquot to avoid repeated freezing and thawing.

**Note**

This product contains sodium azide: a POISONOUS AND HAZARDOUS SUBSTANCE which should be handled by trained staff only.

## Applications

- Immunohistochemistry (Formalin/PFA-fixed paraffin-embedded sections)

Immunohistochemical staining of human kidney with TPCN1 polyclonal antibody (Cat # PAB23577) shows moderate cytoplasmic positivity in cells in renal tubules at 1:20-1:50 dilution.

## Gene Info — TPCN1

**Entrez GeneID**[53373](#)**Protein Accession#**[Q9ULQ1](#)**Gene Name**

TPCN1

**Gene Alias**

FLJ20612, KIAA1169, TPC1

**Gene Description**

two pore segment channel 1

**Omim ID**[609666](#)**Gene Ontology**[Hyperlink](#)**Gene Summary**

Voltage-gated Ca(2+) and Na+ channels have 4 homologous domains, each containing 6 transmembrane segments, S1 to S6. TPCN1 is similar to these channels, but it has only 2 domains containing S1 to S6 (Ishibashi et al., 2000 [PubMed 10753632]).[supplied by OMIM]

**Other Designations**

two-pore channel 1|two-pore segment channel 1