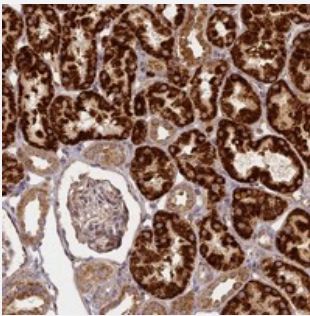


KRT78 polyclonal antibody

Catalog # PAB23573 Size 100 uL

Applications



Immunohistochemistry (Formalin/PFA-fixed paraffin-embedded sections)

Immunohistochemical staining of human kidney with KRT78 polyclonal antibody (Cat # PAB23573) shows strong granular cytoplasmic positivity in cells in renal tubules.

Specification

Product Description	Rabbit polyclonal antibody raised against recombinant KRT78.
Immunogen	Recombinant protein corresponding to amino acids of human KRT78.
Sequence	VGGGLGSTCGLGSGKGSPGSCCTSVTGGSNIILGSGKDPVLDSCSVSGSS
Host	Rabbit
Reactivity	Human
Form	Liquid
Purification	Antigen affinity purification
Isotype	IgG
Recommend Usage	Immunohistochemistry (1:10-1:20) The optimal working dilution should be determined by the end user.
Storage Buffer	In PBS, pH 7.2 (40% glycerol, 0.02% sodium azide)
Storage Instruction	Store at 4°C. For long term storage store at -20°C. Aliquot to avoid repeated freezing and thawing.

Note

This product contains sodium azide: a POISONOUS AND HAZARDOUS SUBSTANCE which should be handled by trained staff only.

Applications

- Immunohistochemistry (Formalin/PFA-fixed paraffin-embedded sections)

Immunohistochemical staining of human kidney with KRT78 polyclonal antibody (Cat # PAB23573) shows strong granular cytoplasmic positivity in cells in renal tubules.

Gene Info — KRT78

Entrez GeneID [196374](#)

Protein Accession# [Q8N1N4](#)

Gene Name KRT78

Gene Alias K5B, Kb40

Gene Description keratin 78

Omim ID [611159](#)

Gene Ontology [Hyperlink](#)

Gene Summary This gene is a member of the type II keratin gene family and encodes a protein with an intermediate filament domain. Keratins are the major structural proteins in epithelial cells, forming a cytoplasmic network of 10 to 12 nm wide intermediate filaments and creating a scaffold that gives cells the ability to withstand mechanical and non-mechanical stresses. The genes of the type II keratin family are located as a gene cluster at 12p13.13. Four pseudogenes of this gene family have been identified. [provided by RefSeq]

Other Designations keratin 5b