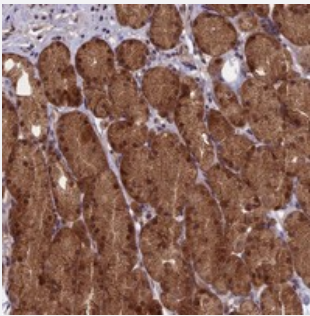


# RCCD1 polyclonal antibody

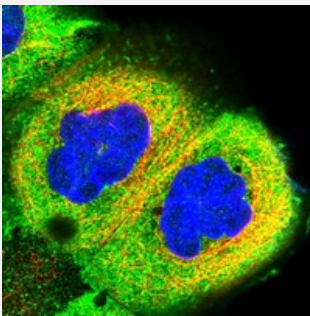
Catalog # PAB23570      Size 100 uL

## Applications



### Immunohistochemistry (Formalin/PFA-fixed paraffin-embedded sections)

Immunohistochemical staining of human stomach with RCCD1 polyclonal antibody (Cat # PAB23570) shows distinct cytoplasmic and nuclear positivity in glandular cells at 1:50-1:200 dilution.



### Immunofluorescence

Immunofluorescent staining of human cell line A-431 with RCCD1 polyclonal antibody (Cat # PAB23570) at 1-4 ug/mL dilution shows positivity in plasma membrane and cytoplasm.

## Specification

Product Description	Rabbit polyclonal antibody raised against recombinant RCCD1.
Immunogen	Recombinant protein corresponding to amino acids of human RCCD1.
Sequence	ELEPRLLEALQGLVMAEVAAGGWHSVCVSETGDIYMGWNESGQLALPTRNLAEDGETVAREAT ELNEDGSQVKRTGG
Host	Rabbit
Reactivity	Human
Form	Liquid

<b>Purification</b>	Antigen affinity purification
<b>Isotype</b>	IgG
<b>Recommend Usage</b>	Immunohistochemistry (1:50-1:200) Immunofluorescence (1-4 ug/mL) The optimal working dilution should be determined by the end user.
<b>Storage Buffer</b>	In PBS, pH 7.2 (40% glycerol, 0.02% sodium azide)
<b>Storage Instruction</b>	Store at 4°C. For long term storage store at -20°C. Aliquot to avoid repeated freezing and thawing.
<b>Note</b>	This product contains sodium azide: a POISONOUS AND HAZARDOUS SUBSTANCE which should be handled by trained staff only.

## Applications

- Immunohistochemistry (Formalin/PFA-fixed paraffin-embedded sections)

Immunohistochemical staining of human stomach with RCCD1 polyclonal antibody (Cat # PAB23570) shows distinct cytoplasmic and nuclear positivity in glandular cells at 1:50-1:200 dilution.

- Immunofluorescence

Immunofluorescent staining of human cell line A-431 with RCCD1 polyclonal antibody (Cat # PAB23570) at 1-4 ug/mL dilution shows positivity in plasma membrane and cytoplasm.

## Gene Info — RCCD1

<b>Entrez GeneID</b>	<a href="#">91433</a>
<b>Protein Accession#</b>	<a href="#">A6NED2</a>
<b>Gene Name</b>	RCCD1
<b>Gene Alias</b>	MGC14386
<b>Gene Description</b>	RCC1 domain containing 1
<b>Gene Ontology</b>	<a href="#">Hyperlink</a>
<b>Other Designations</b>	RCC1 domain-containing protein 1