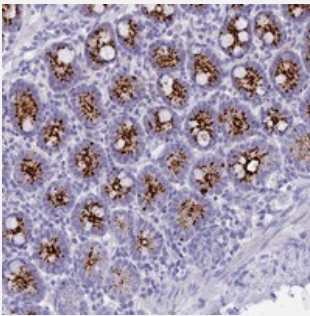


# C12orf29 polyclonal antibody

Catalog # PAB23568      Size 100 uL

## Applications



### Immunohistochemistry (Formalin/PFA-fixed paraffin-embedded sections)

Immunohistochemical staining of human small intestine with C12orf29 polyclonal antibody (Cat # PAB23568) shows strong cytoplasmic positivity, seen with a granular pattern in glandular cells.

## Specification

<b>Product Description</b>	Rabbit polyclonal antibody raised against recombinant C12orf29.
<b>Immunogen</b>	Recombinant protein corresponding to amino acids of human C12orf29.
<b>Sequence</b>	QIRNLPSLKHNDLLSWFEDCKEGKIEGMVWHCSDGCLIKVHRHHLGLCWPIPD TYMNSRPVIINMNL NKCD SA
<b>Host</b>	Rabbit
<b>Reactivity</b>	Human
<b>Form</b>	Liquid
<b>Purification</b>	Antigen affinity purification
<b>Isotype</b>	IgG
<b>Recommend Usage</b>	Immunohistochemistry (1:20-1:50) The optimal working dilution should be determined by the end user.
<b>Storage Buffer</b>	In PBS, pH 7.2 (40% glycerol, 0.02% sodium azide)

**Storage Instruction**

Store at 4°C. For long term storage store at -20°C.  
Aliquot to avoid repeated freezing and thawing.

**Note**

This product contains sodium azide: a POISONOUS AND HAZARDOUS SUBSTANCE which should be handled by trained staff only.

## Applications

- Immunohistochemistry (Formalin/PFA-fixed paraffin-embedded sections)

Immunohistochemical staining of human small intestine with C12orf29 polyclonal antibody (Cat # PAB23568) shows strong cytoplasmic positivity, seen with a granular pattern in glandular cells.

## Gene Info — C12orf29

**Entrez GeneID**[91298](#)**Protein Accession#**[Q8N999](#)**Gene Name**

C12orf29

**Gene Alias**

DKFZp313K0436, DKFZp434N2030, DKFZp686L04169, FLJ38158, MGC102978

**Gene Description**

chromosome 12 open reading frame 29

**Gene Ontology**[Hyperlink](#)**Other Designations**

hypothetical protein LOC91298