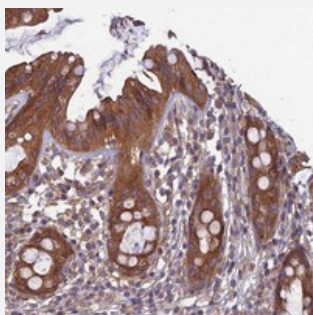


WDR24 polyclonal antibody

Catalog # PAB23556 Size 100 uL

Applications



Immunohistochemistry (Formalin/PFA-fixed paraffin-embedded sections)

Immunohistochemical staining of human rectum with WDR24 polyclonal antibody (Cat # PAB23556) shows strong cytoplasmic positivity in glandular cells at 1:50-1:200 dilution.

Specification

Product Description	Rabbit polyclonal antibody raised against recombinant WDR24.
Immunogen	Recombinant protein corresponding to amino acids of human WDR24.
Sequence	EQFVEKLNLRVGRKPSLNLSQADVVWHQMDENLLATAATNGVVVTWNLGRPSRNKQDQLFTEH KRTVNKVCFHPTAEHVLLSGSQDGFMKCFDLRRKDSVST
Host	Rabbit
Reactivity	Human
Form	Liquid
Purification	Antigen affinity purification
Isotype	IgG
Recommend Usage	Immunohistochemistry (1:50-1:200) The optimal working dilution should be determined by the end user.
Storage Buffer	In PBS, pH 7.2 (40% glycerol, 0.02% sodium azide)

Storage Instruction

Store at 4°C. For long term storage store at -20°C.
Aliquot to avoid repeated freezing and thawing.

Note

This product contains sodium azide: a POISONOUS AND HAZARDOUS SUBSTANCE which should be handled by trained staff only.

Applications

- Immunohistochemistry (Formalin/PFA-fixed paraffin-embedded sections)

Immunohistochemical staining of human rectum with WDR24 polyclonal antibody (Cat # PAB23556) shows strong cytoplasmic positivity in glandular cells at 1:50-1:200 dilution.

Gene Info — WDR24

Entrez GeneID[84219](#)**Protein Accession#**[Q96S15](#)**Gene Name**

WDR24

Gene Alias

C16orf21, DKFZp434F054, JFP7

Gene Description

WD repeat domain 24

Gene Ontology[Hyperlink](#)**Other Designations**

-