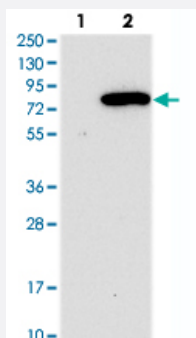


NLRP10 polyclonal antibody

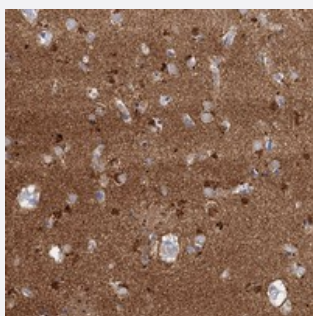
Catalog # PAB23553 Size 100 uL

Applications



Western Blot (Transfected lysate)

Western blot analysis of Lane 1: Negative control (vector only transfected HEK293T lysate), Lane 2: Over-expression Lysate (Co-expressed with a C-terminal myc-DDK tag (~3.1 kDa) in mammalian HEK293T cells) with NLRP10 polyclonal antibody (Cat # PAB23553) at 1:250-1:500 dilution.



Immunohistochemistry (Formalin/PFA-fixed paraffin-embedded sections)

Immunohistochemical staining of human lateral ventricle with NLRP10 polyclonal antibody (Cat # PAB23553) shows strong cytoplasmic positivity in neuronal cells at 1:50-1:200 dilution.

Specification

Product Description	Rabbit polyclonal antibody raised against recombinant NLRP10.
Immunogen	Recombinant protein corresponding to amino acids of human NLRP10.
Sequence	RLLEVKEQEGNDEMTLTMQFLDISKKDSFSNLELKFCFRISPCLAQDLKHFKEQMESMKHNRT WDLEFSLYEAKIKNLVKGQMNNVSFKIKHSNEKKSQ
Host	Rabbit
Reactivity	Human
Form	Liquid

Purification	Antigen affinity purification
Isotype	IgG
Recommend Usage	Immunohistochemistry (1:50-1:200) Western Blot (1:250-1:500) The optimal working dilution should be determined by the end user.
Storage Buffer	In PBS, pH 7.2 (40% glycerol, 0.02% sodium azide)
Storage Instruction	Store at 4°C. For long term storage store at -20°C. Aliquot to avoid repeated freezing and thawing.
Note	This product contains sodium azide: a POISONOUS AND HAZARDOUS SUBSTANCE which should be handled by trained staff only.

Applications

- Western Blot (Transfected lysate)

Western blot analysis of Lane 1: Negative control (vector only transfected HEK293T lysate), Lane 2: Over-expression Lysate (Co-expressed with a C-terminal myc-DDK tag (~3.1 kDa) in mammalian HEK293T cells) with NLRP10 polyclonal antibody (Cat # PAB23553) at 1:250-1:500 dilution.

- Immunohistochemistry (Formalin/PFA-fixed paraffin-embedded sections)

Immunohistochemical staining of human lateral ventricle with NLRP10 polyclonal antibody (Cat # PAB23553) shows strong cytoplasmic positivity in neuronal cells at 1:50-1:200 dilution.

Gene Info — NLRP10

Entrez GeneID	338322
Protein Accession#	Q86W26
Gene Name	NLRP10
Gene Alias	CLR11.1, NALP10, NOD8, PAN5, PYNOD
Gene Description	NLR family, pyrin domain containing 10
Omim ID	609662
Gene Ontology	Hyperlink

Gene Summary

Members of the NALP protein family typically contain a NACHT domain, a NACHT-associated domain (NAD), a C-terminal leucine-rich repeat (LRR) region, and an N-terminal pyrin domain (PYD). The protein encoded by this gene belongs to the NALP protein family despite lacking the LRR region. This protein likely plays a regulatory role in the innate immune system. The protein belongs to the signal-induced multiprotein complex, the inflammasome, that activates the pro-inflammatory caspases, caspase-1 and caspase-5. Other experiments indicate that this gene acts as a multifunctional negative regulator of inflammation and apoptosis. [provided by RefSeq]

Other Designations

NACHT, leucine rich repeat and PYD containing 10|nucleotide-binding oligomerization domain, leucine rich repeat and pyrin domain containing 10

Disease

- [Crohn Disease](#)
- [Genetic Predisposition to Disease](#)