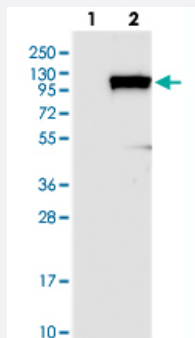


KIF18A polyclonal antibody

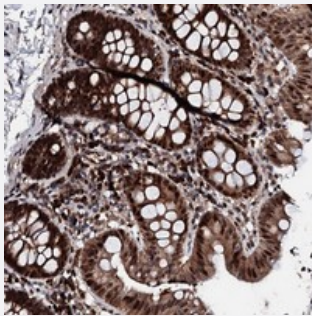
Catalog # PAB23550 Size 100 uL

Applications



Western Blot (Transfected lysate)

Western blot analysis of Lane 1: Negative control (vector only transfected HEK293T lysate), Lane 2: Over-expression Lysate (Co-expressed with a C-terminal myc-DDK tag (~3.1 kDa) in mammalian HEK293T cells) with KIF18A polyclonal antibody (Cat # PAB23550).



Immunohistochemistry (Formalin/PFA-fixed paraffin-embedded sections)

Immunohistochemical staining of human colon with KIF18A polyclonal antibody (Cat # PAB23550) shows strong cytoplasmic and nuclear positivity in glandular cells.

Specification

Product Description	Rabbit polyclonal antibody raised against recombinant KIF18A.
Immunogen	Recombinant protein corresponding to amino acids of human KIF18A.
Sequence	AFQNPSTVTLMKPSSFTTSFQAISNNSDNCLKMLCEVAIPHNRRKECGQEDLDSTFTICEDIKSS KCKLPEQESLPNDNKDILQRLDP
Host	Rabbit
Reactivity	Human
Form	Liquid

Purification	Antigen affinity purification
Isotype	IgG
Recommend Usage	Immunohistochemistry (1:200-1:500) Western Blot (1:250-1:500) The optimal working dilution should be determined by the end user.
Storage Buffer	In PBS, pH 7.2 (40% glycerol, 0.02% sodium azide)
Storage Instruction	Store at 4°C. For long term storage store at -20°C. Aliquot to avoid repeated freezing and thawing.
Note	This product contains sodium azide: a POISONOUS AND HAZARDOUS SUBSTANCE which should be handled by trained staff only.

Applications

- Western Blot (Transfected lysate)

Western blot analysis of Lane 1: Negative control (vector only transfected HEK293T lysate), Lane 2: Over-expression Lysate (Co-expressed with a C-terminal myc-DDK tag (~3.1 kDa) in mammalian HEK293T cells) with KIF18A polyclonal antibody (Cat # PAB23550).

- Immunohistochemistry (Formalin/PFA-fixed paraffin-embedded sections)

Immunohistochemical staining of human colon with KIF18A polyclonal antibody (Cat # PAB23550) shows strong cytoplasmic and nuclear positivity in glandular cells.

Gene Info — KIF18A

Entrez GeneID	81930
Protein Accession#	Q8NI77
Gene Name	KIF18A
Gene Alias	DKFZp434G2226, MS-KIF18A
Gene Description	kinesin family member 18A
Gene Ontology	Hyperlink
Gene Summary	KIF18A is a member of the kinesin superfamily of microtubule-associated molecular motors (see MIM 148760) that use hydrolysis of ATP to produce force and movement along microtubules (Luboshits and Benayahu, 2005 [PubMed 15878648]).[supplied by OMIM]
Other Designations	-