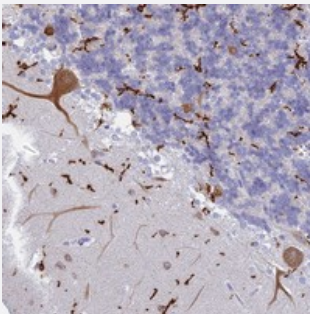


CEP152 polyclonal antibody

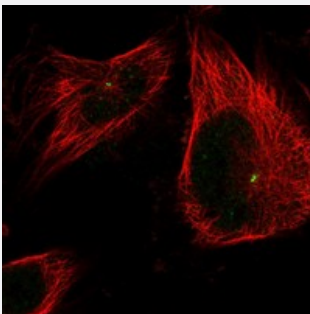
Catalog # PAB23542 Size 100 uL

Applications



Immunohistochemistry (Formalin/PFA-fixed paraffin-embedded sections)

Immunohistochemical staining of human cerebellum with CEP152 polyclonal antibody (Cat # PAB23542) shows strong cytoplasmic positivity in purkinje cells.



Immunofluorescence

Immunofluorescent staining of human cell line U-251 MG with CEP152 polyclonal antibody (Cat # PAB23542) at 1-4 ug/mL dilution shows positivity in centrosome.

Specification

Product Description	Rabbit polyclonal antibody raised against recombinant CEP152.
Immunogen	Recombinant protein corresponding to amino acids of human CEP152.
Sequence	EGELNIELTESYVDLGIKKVNWKSKVTSIVQEEDPNEELSKDEFILKLKAEVQRLLGSNSMKRHL VSQQLQNDLKDCHKKIEDLHQVKKDEKSIEVETKTDSE
Host	Rabbit
Reactivity	Human
Form	Liquid

Purification	Antigen affinity purification
Isotype	IgG
Recommend Usage	Immunohistochemistry (1:50-1:200) Immunofluorescence (1-4 ug/mL) The optimal working dilution should be determined by the end user.
Storage Buffer	In PBS, pH 7.2 (40% glycerol, 0.02% sodium azide)
Storage Instruction	Store at 4°C. For long term storage store at -20°C. Aliquot to avoid repeated freezing and thawing.
Note	This product contains sodium azide: a POISONOUS AND HAZARDOUS SUBSTANCE which should be handled by trained staff only.

Applications

- Immunohistochemistry (Formalin/PFA-fixed paraffin-embedded sections)

Immunohistochemical staining of human cerebellum with CEP152 polyclonal antibody (Cat # PAB23542) shows strong cytoplasmic positivity in purkinje cells.

- Immunofluorescence

Immunofluorescent staining of human cell line U-251 MG with CEP152 polyclonal antibody (Cat # PAB23542) at 1-4 ug/mL dilution shows positivity in centrosome.

Gene Info — CEP152

Entrez GeneID	22995
Protein Accession#	O94986
Gene Name	CEP152
Gene Alias	KIAA0912
Gene Description	centrosomal protein 152kDa
Gene Ontology	Hyperlink
Other Designations	-

Publication Reference

- [PLK4-phosphorylated NEDD1 facilitates cartwheel assembly and centriole biogenesis initiations.](#)

Wangfei Chi, Gang Wang, Guangwei Xin, Qing Jiang, Chuanmao Zhang.

The Journal of Cell Biology 2021 Jan; 220(1):e202002151.

Application: IF, Human, U-2 OS cells