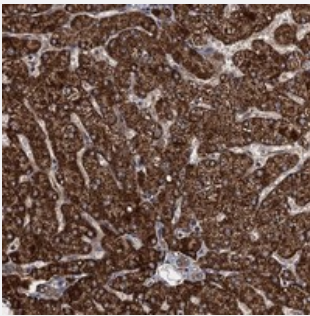


# ATHL1 polyclonal antibody

Catalog # PAB23538      Size 100 uL

## Applications



### Immunohistochemistry (Formalin/PFA-fixed paraffin-embedded sections)

Immunohistochemical staining of human liver with ATHL1 polyclonal antibody (Cat # PAB23538) shows strong cytoplasmic positivity in hepatocytes at 1:20-1:50 dilution.

## Specification

Product Description	Rabbit polyclonal antibody raised against recombinant ATHL1.
Immunogen	Recombinant protein corresponding to amino acids of human ATHL1.
Sequence	FHQEFDGYEPGEVVKQADVLLGYVPFSLSPDVRRKNLEIYEAVTSPQGPAMTWSMFAVGWM ELKDAVRARGLLDRSFANMAEPFKVWTENADGS
Host	Rabbit
Reactivity	Human
Form	Liquid
Purification	Antigen affinity purification
Isotype	IgG
Recommend Usage	Immunohistochemistry (1:20-1:50) The optimal working dilution should be determined by the end user.
Storage Buffer	In PBS, pH 7.2 (40% glycerol, 0.02% sodium azide)

**Storage Instruction**

Store at 4°C. For long term storage store at -20°C.  
Aliquot to avoid repeated freezing and thawing.

**Note**

This product contains sodium azide: a POISONOUS AND HAZARDOUS SUBSTANCE which should be handled by trained staff only.

## Applications

- Immunohistochemistry (Formalin/PFA-fixed paraffin-embedded sections)

Immunohistochemical staining of human liver with ATHL1 polyclonal antibody (Cat # PAB23538) shows strong cytoplasmic positivity in hepatocytes at 1:20-1:50 dilution.

## Gene Info — ATHL1

**Entrez GeneID** [80162](#)

**Protein Accession#** [Q32M88](#)

**Gene Name** ATHL1

**Gene Alias** FLJ22635, MGC129858, MGC129859

**Gene Description** ATH1, acid trehalase-like 1 (yeast)

**Gene Ontology** [Hyperlink](#)

**Gene Summary** O

**Other Designations** ATH1, acid trehalase-like 1