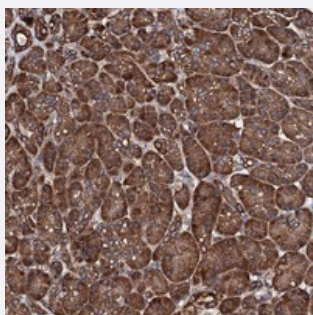


CKAP5 polyclonal antibody

Catalog # PAB23537 Size 100 uL

Applications



Immunohistochemistry (Formalin/PFA-fixed paraffin-embedded sections)

Immunohistochemical staining of human pancreas with CKAP5 polyclonal antibody (Cat # PAB23537) shows strong cytoplasmic positivity in exocrine glandular cells.

Specification

Product Description	Rabbit polyclonal antibody raised against recombinant CKAP5.
Immunogen	Recombinant protein corresponding to amino acids of human CKAP5.
Sequence	WKARLSGYEEALKIFQKIKDEKSPEWSKFLGLIKKFVTDSNAVVLKLGLEAALVYVENAHVAGKTT GEVSGVSVKVFNQPKAKAKE
Host	Rabbit
Reactivity	Human
Form	Liquid
Purification	Antigen affinity purification
Isotype	IgG
Recommend Usage	Immunohistochemistry (1:200-1:500) The optimal working dilution should be determined by the end user.
Storage Buffer	In PBS, pH 7.2 (40% glycerol, 0.02% sodium azide).

Storage Instruction

Store at 4°C for short term storage. For long term storage store at -20°C.
Aliquot to avoid repeated freezing and thawing.

Note

This product contains sodium azide: a POISONOUS AND HAZARDOUS SUBSTANCE which should be handled by trained staff only.

Applications

- Immunohistochemistry (Formalin/PFA-fixed paraffin-embedded sections)

Immunohistochemical staining of human pancreas with CKAP5 polyclonal antibody (Cat # PAB23537) shows strong cytoplasmic positivity in exocrine glandular cells.

Gene Info — CKAP5

Entrez GeneID[9793](#)**Protein Accession#**[Q14008](#)**Gene Name**

CKAP5

Gene Alias

CHTOG, FLJ35359, KIAA0097, MSPS, TOG, TOGp, ch-TOG

Gene Description

cytoskeleton associated protein 5

Omim ID[611142](#)**Gene Ontology**[Hyperlink](#)**Other Designations**

colonic and hepatic tumor over-expressed|colonic and hepatic tumor over-expressed protein