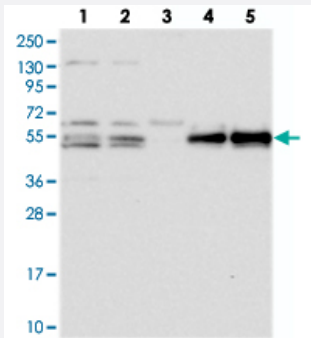


PRRC1 polyclonal antibody

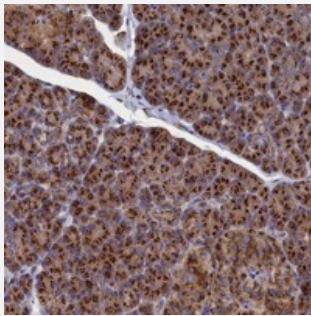
Catalog # PAB23525 Size 100 uL

Applications



Western Blot

Western blot analysis of Lane 1: RT-4, Lane 2: U-251 MG, Lane 3: Human Plasma, Lane 4: Liver, Lane 5: Tonsil with PRRC1 polyclonal antibody (Cat # PAB23525).



Immunohistochemistry (Formalin/PFA-fixed paraffin-embedded sections)

Immunohistochemical staining of human pancreas with PRRC1 polyclonal antibody (Cat # PAB23525) shows strong granular cytoplasmic positivity in exocrine glandular cells.

Specification

Product Description	Rabbit polyclonal antibody raised against recombinant PRRC1.
Immunogen	Recombinant protein corresponding to amino acids of human PRRC1.
Sequence	AFQEVFGLAVVVGEAGQSNIAPQVPVGYAAGLKGAQERIDSLRRTGVIHEKQTAVSVENFIAELLPD KWFDIGCLVVEDPVH
Host	Rabbit
Reactivity	Human, Mouse, Rat
Form	Liquid

Purification	Antigen affinity purification
Isotype	IgG
Recommend Usage	Immunohistochemistry (1:500-1:1000) Western Blot (1:250-1:500) The optimal working dilution should be determined by the end user.
Storage Buffer	In PBS, pH 7.2 (40% glycerol, 0.02% sodium azide)
Storage Instruction	Store at 4°C. For long term storage store at -20°C. Aliquot to avoid repeated freezing and thawing.
Note	This product contains sodium azide: a POISONOUS AND HAZARDOUS SUBSTANCE which should be handled by trained staff only.

Applications

- Western Blot

Western blot analysis of Lane 1: RT-4, Lane 2: U-251 MG, Lane 3: Human Plasma, Lane 4: Liver, Lane 5: Tonsil with PRRC1 polyclonal antibody (Cat # PAB23525).

- Immunohistochemistry (Formalin/PFA-fixed paraffin-embedded sections)

Immunohistochemical staining of human pancreas with PRRC1 polyclonal antibody (Cat # PAB23525) shows strong granular cytoplasmic positivity in exocrine glandular cells.

Gene Info — PRRC1

Entrez GeneID	133619
Protein Accession#	Q96M27
Gene Name	PRRC1
Gene Alias	FLJ32875
Gene Description	proline-rich coiled-coil 1
Gene Ontology	Hyperlink
Other Designations	-