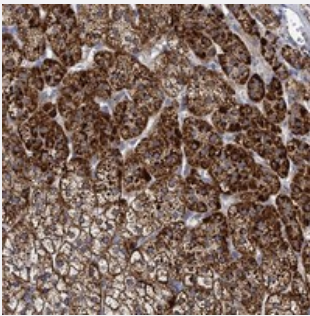


PANX2 polyclonal antibody

Catalog # PAB23512 Size 100 uL

Applications



Immunohistochemistry (Formalin/PFA-fixed paraffin-embedded sections)

Immunohistochemical staining of human adrenal gland with PANX2 polyclonal antibody (Cat # PAB23512) shows strong cytoplasmic positivity in cortical cells.

Specification

Product Description	Rabbit polyclonal antibody raised against recombinant PANX2.
Immunogen	Recombinant protein corresponding to amino acids of human PANX2.
Sequence	SNFIFDKLHKVGIKTRRQWRRSQFCDINLAMFCNENRDHIKSLNRLDFITNESDLMYDNVVRQLLA ALAQSNHDATPTVRDSGVQTVDP
Host	Rabbit
Reactivity	Human
Form	Liquid
Purification	Antigen affinity purification
Isotype	IgG
Recommend Usage	Immunohistochemistry (1:50-1:200) The optimal working dilution should be determined by the end user.
Storage Buffer	In PBS, pH 7.2 (40% glycerol, 0.02% sodium azide)

Storage Instruction

Store at 4°C. For long term storage store at -20°C.
Aliquot to avoid repeated freezing and thawing.

Note

This product contains sodium azide: a POISONOUS AND HAZARDOUS SUBSTANCE which should be handled by trained staff only.

Applications

- Immunohistochemistry (Formalin/PFA-fixed paraffin-embedded sections)

Immunohistochemical staining of human adrenal gland with PANX2 polyclonal antibody (Cat # PAB23512) shows strong cytoplasmic positivity in cortical cells.

Gene Info — PANX2

Entrez GeneID [56666](#)

Protein Accession# [Q96RD6](#)

Gene Name PANX2

Gene Alias MGC119432, PX2, hPANX2

Gene Description pannexin 2

Omim ID [608421](#)

Gene Ontology [Hyperlink](#)

Gene Summary The protein encoded by this gene belongs to the innexin family. Innexin family members are the structural components of gap junctions. This protein and pannexin 1 are abundantly expressed in central nervous system (CNS) and are coexpressed in various neuronal populations. Studies in Xenopus oocytes suggest that this protein alone and in combination with pannexin 1 may form cell type-specific gap junctions with distinct properties. Multiple transcript variants encoding different isoforms have been found for this gene. [provided by RefSeq]

Other Designations OTTHUMP00000028557

Disease

- [Cerebral Hemorrhage](#)
- [Genetic Predisposition to Disease](#)
- [Hypertension](#)

- [Intracranial Hemorrhages](#)
- [Stroke](#)
- [Subarachnoid Hemorrhage](#)