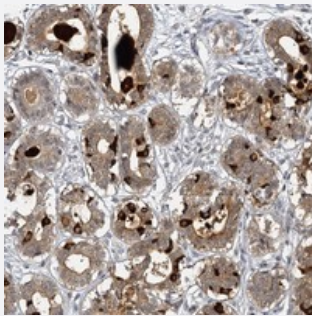


MUCL1 polyclonal antibody

Catalog # PAB23510 Size 100 uL

Applications



Immunohistochemistry (Formalin/PFA-fixed paraffin-embedded sections)

Immunohistochemical staining of human breast with MUCL1 polyclonal antibody (Cat # PAB23510) shows moderate cytoplasmic and extracellular positivity in glandular cells at 1:20-1:50 dilution.

Specification

Product Description	Rabbit polyclonal antibody raised against recombinant MUCL1.
Immunogen	Recombinant protein corresponding to amino acids of human MUCL1.
Sequence	AQNPTTAAPADTYPATGPADDEAPDAETTAAATTA
Host	Rabbit
Reactivity	Human
Form	Liquid
Purification	Antigen affinity purification
Isotype	IgG
Recommend Usage	Immunohistochemistry (1:20-1:50) The optimal working dilution should be determined by the end user.
Storage Buffer	In PBS, pH 7.2 (40% glycerol, 0.02% sodium azide)
Storage Instruction	Store at 4°C. For long term storage store at -20°C. Aliquot to avoid repeated freezing and thawing.

Note

This product contains sodium azide: a POISONOUS AND HAZARDOUS SUBSTANCE which should be handled by trained staff only.

Applications

- Immunohistochemistry (Formalin/PFA-fixed paraffin-embedded sections)

Immunohistochemical staining of human breast with MUCL1 polyclonal antibody (Cat # PAB23510) shows moderate cytoplasmic and extracellular positivity in glandular cells at 1:20-1:50 dilution.

Gene Info — MUCL1

Entrez GeneID	118430
---------------	------------------------

Protein Accession#	Q96DR8
--------------------	------------------------

Gene Name	MUCL1
-----------	-------

Gene Alias	SBEM
------------	------

Gene Description	mucin-like 1
------------------	--------------

Omim ID	610857
---------	------------------------

Gene Ontology	Hyperlink
---------------	---------------------------

Other Designations	small breast epithelial mucin
--------------------	-------------------------------