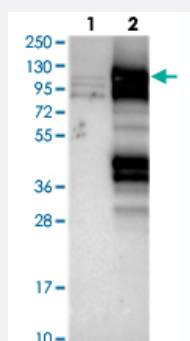


DDX23 polyclonal antibody

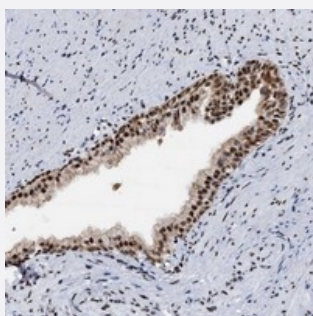
Catalog # PAB23506 Size 100 uL

Applications



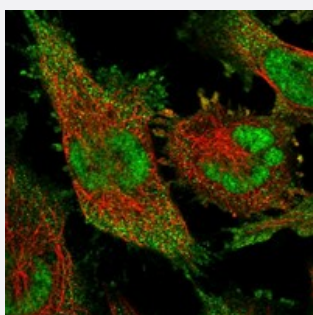
Western Blot (Transfected lysate)

Western blot analysis of Lane 1: Negative control (vector only transfected HEK293T lysate), Lane 2: Over-expression Lysate (Co-expressed with a C-terminal myc-DDK tag (~3.1 kDa) in mammalian HEK293T cells) with DDX23 polyclonal antibody (Cat # PAB23506) at 1:250-1:500 dilution.



Immunohistochemistry (Formalin/PFA-fixed paraffin-embedded sections)

Immunohistochemical staining of human prostate with DDX23 polyclonal antibody (Cat # PAB23506) shows strong nuclear positivity in glandular cells at 1:1000-1:2500 dilution.



Immunofluorescence

Immunofluorescent staining of human cell line U-251 MG with DDX23 polyclonal antibody (Cat # PAB23506) at 1-4 ug/mL dilution shows positivity in nucleus but not nucleoli and plasma membrane.

Specification

Product Description

Rabbit polyclonal antibody raised against recombinant DDX23.

Immunogen

Recombinant protein corresponding to amino acids of human DDX23.

Sequence	RNKKDRDRDKDGHRRDKDRKRSSLSPGRGKDFKSRKDRDSKKDEEDEHGDKKPKAQPLSLEE LLAKKKAEAAAAEAKPKFLSKAEREAEALKRRQQ
Host	Rabbit
Reactivity	Human
Form	Liquid
Purification	Antigen affinity purification
Isotype	IgG
Recommend Usage	Immunohistochemistry (1:1000-1:2500) Western Blot (1:250-1:500) Immunofluorescence (1-4 ug/mL) The optimal working dilution should be determined by the end user.
Storage Buffer	In PBS, pH 7.2 (40% glycerol, 0.02% sodium azide)
Storage Instruction	Store at 4°C. For long term storage store at -20°C. Aliquot to avoid repeated freezing and thawing.
Note	This product contains sodium azide: a POISONOUS AND HAZARDOUS SUBSTANCE which should be handled by trained staff only.

Applications

- Western Blot (Transfected lysate)

Western blot analysis of Lane 1: Negative control (vector only transfected HEK293T lysate), Lane 2: Over-expression Lysate (Co-expressed with a C-terminal myc-DDK tag (~3.1 kDa) in mammalian HEK293T cells) with DDX23 polyclonal antibody (Cat # PAB23506) at 1:250-1:500 dilution.

- Immunohistochemistry (Formalin/PFA-fixed paraffin-embedded sections)

Immunohistochemical staining of human prostate with DDX23 polyclonal antibody (Cat # PAB23506) shows strong nuclear positivity in glandular cells at 1:1000-1:2500 dilution.

- Immunofluorescence

Immunofluorescent staining of human cell line U-251 MG with DDX23 polyclonal antibody (Cat # PAB23506) at 1-4 ug/mL dilution shows positivity in nucleus but not nucleoli and plasma membrane.

Gene Info — DDX23

Entrez GeneID [9416](#)

Protein Accession#	Q9BUQ8
Gene Name	DDX23
Gene Alias	MGC8416, PRPF28, U5-100K, U5-100KD, prp28
Gene Description	DEAD (Asp-Glu-Ala-Asp) box polypeptide 23
Gene Ontology	Hyperlink
Gene Summary	<p>This gene encodes a member of the DEAD box protein family. DEAD box proteins, characterized by the conserved motif Asp-Glu-Ala-Asp (DEAD), are putative RNA helicases. They are implicated in a number of cellular processes involving alteration of RNA secondary structure, such as translation initiation, nuclear and mitochondrial splicing, and ribosome and spliceosome assembly. Based on their distribution patterns, some members of this family are believed to be involved in embryogenesis, spermatogenesis, and cellular growth and division. The protein encoded by this gene is a component of the U5 snRNP complex; it may facilitate conformational changes in the spliceosome during nuclear pre-mRNA splicing. An alternatively spliced transcript variant has been found for this gene, but its biological validity has not been determined. [provided by RefSeq]</p>
Other Designations	PRP28 homolog, yeast PRP28p homolog U5 snRNP 100 kD protein