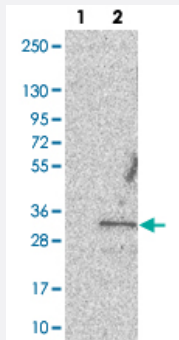


C11orf70 polyclonal antibody

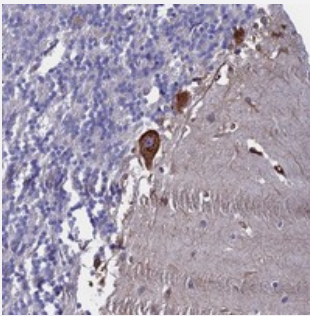
Catalog # PAB23505 Size 100 uL

Applications



Western Blot (Transfected lysate)

Western blot analysis of Lane 1: Negative control (vector only transfected HEK293T lysate).
Lane 2: Over-expression lysate (Co-expressed with a C-terminal myc-DDK tag (~3.1 kDa) in mammalian HEK293T cells with C11orf70 polyclonal antibody (Cat # PAB23505).



Immunohistochemistry (Formalin/PFA-fixed paraffin-embedded sections)

Immunohistochemical staining of human cerebellum with C11orf70 polyclonal antibody (Cat # PAB23505) shows strong cytoplasmic positivity in Purkinje cells.

Specification

| | |
|---------------------|---|
| Product Description | Rabbit polyclonal antibody raised against recombinant C11orf70. |
| Immunogen | Recombinant protein corresponding to amino acids of human C11orf70. |
| Sequence | RLYDEDIVRDSGHIVKCLDSFCDFLISDELRRVLLVEDSEKYEIFSQPDREEFLFCLFKHLCLGGA LCQYEDVIS |
| Host | Rabbit |
| Reactivity | Human |
| Form | Liquid |

| | |
|---------------------|--|
| Purification | Antigen affinity purification |
| Isotype | IgG |
| Recommend Usage | Immunohistochemistry (1:20-1:50) The optimal working dilution should be determined by the end user. |
| Storage Buffer | In PBS, pH 7.2 (40% glycerol, 0.02% sodium azide) |
| Storage Instruction | Store at 4°C. For long term storage store at -20°C. Aliquot to avoid repeated freezing and thawing. |
| Note | This product contains sodium azide: a POISONOUS AND HAZARDOUS SUBSTANCE which should be handled by trained staff only. |

Applications

- Western Blot (Transfected lysate)

Western blot analysis of Lane 1: Negative control (vector only transfected HEK293T lysate).

Lane 2: Over-expression lysate (Co-expressed with a C-terminal myc-DDK tag (~3.1 kDa) in mammalian HEK293T cells with C11orf70 polyclonal antibody (Cat # PAB23505).

- Immunohistochemistry (Formalin/PFA-fixed paraffin-embedded sections)

Immunohistochemical staining of human cerebellum with C11orf70 polyclonal antibody (Cat # PAB23505) shows strong cytoplasmic positivity in purkinje cells.

Gene Info — C11orf70

| | |
|--------------------|-------------------------------------|
| Entrez GeneID | 85016 |
| Protein Accession# | Q9BRQ4 |
| Gene Name | C11orf70 |
| Gene Alias | MGC13040 |
| Gene Description | chromosome 11 open reading frame 70 |
| Gene Ontology | Hyperlink |
| Other Designations | hypothetical protein LOC85016 |