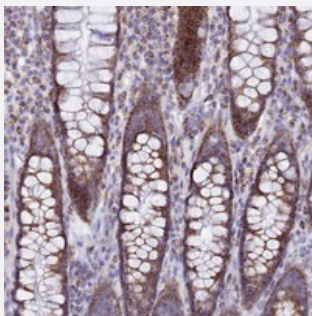


# TMEM206 polyclonal antibody

Catalog # PAB23492      Size 100 uL

## Applications



### Immunohistochemistry (Formalin/PFA-fixed paraffin-embedded sections)

Immunohistochemical staining of human rectum with TMEM206 polyclonal antibody (Cat # PAB23492) shows strong cytoplasmic positivity in glandular cells at 1:20-1:50 dilution.

## Specification

Product Description	Rabbit polyclonal antibody raised against recombinant TMEM206.
Immunogen	Recombinant protein corresponding to amino acids of human TMEM206.
Sequence	LKHPVMSVSYKEVDRYDAPGIALYPGQAQLLSCKHHYEVIPPLTSPGQPGDMNCTTQRINYDPFS NQTVKSALIVQGPREVKKRELVFLQFRLNKSSDFSAIDYLLFSSFQEFLQSPNRV
Host	Rabbit
Reactivity	Human
Form	Liquid
Purification	Antigen affinity purification
Isotype	IgG
Recommend Usage	Immunohistochemistry (1:20-1:50) The optimal working dilution should be determined by the end user.
Storage Buffer	In PBS, pH 7.2 (40% glycerol, 0.02% sodium azide)

**Storage Instruction**

Store at 4°C. For long term storage store at -20°C.  
Aliquot to avoid repeated freezing and thawing.

**Note**

This product contains sodium azide: a POISONOUS AND HAZARDOUS SUBSTANCE which should be handled by trained staff only.

## Applications

- Immunohistochemistry (Formalin/PFA-fixed paraffin-embedded sections)

Immunohistochemical staining of human rectum with TMEM206 polyclonal antibody (Cat # PAB23492) shows strong cytoplasmic positivity in glandular cells at 1:20-1:50 dilution.

## Gene Info — TMEM206

**Entrez GeneID**[55248](#)**Protein Accession#**[Q9H813](#)**Gene Name**

TMEM206

**Gene Alias**

C1orf75, FLJ10874, RP11-384C4.5

**Gene Description**

transmembrane protein 206

**Gene Ontology**[Hyperlink](#)**Other Designations**

OTTHUMP00000034892