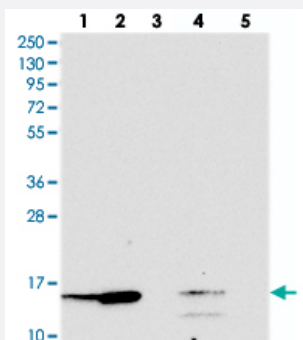


# SNRPD1 polyclonal antibody

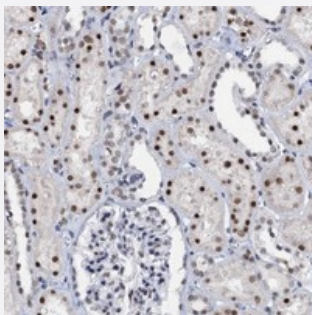
Catalog # PAB23487      Size 100 uL

## Applications



### Western Blot

Western blot analysis of Lane 1: RT-4, Lane 2: U-251 MG, Lane 3: Human Plasma, Lane 4: Liver, Lane 5: Tonsil with SNRPD1 polyclonal antibody (Cat # PAB23487).



### Immunohistochemistry (Formalin/PFA-fixed paraffin-embedded sections)

Immunohistochemical staining of human kidney with SNRPD1 polyclonal antibody (Cat # PAB23487) shows strong nuclear positivity in cells of tubules.

## Specification

<b>Product Description</b>	Rabbit polyclonal antibody raised against recombinant SNRPD1.
<b>Immunogen</b>	Recombinant protein corresponding to amino acids of human SNRPD1.
<b>Sequence</b>	SMNTHLKAVKMTLKNREPVQLETLSIRGNNIRYFILPDSLPLDTLLVDVEPKVKSKKREAVAGRGR
<b>Host</b>	Rabbit
<b>Reactivity</b>	Human
<b>Form</b>	Liquid
<b>Purification</b>	Antigen affinity purification

Isotype	IgG
Recommend Usage	Immunohistochemistry (1:50-1:200) Western Blot (1:250-1:500) The optimal working dilution should be determined by the end user.
Storage Buffer	In PBS, pH 7.2 (40% glycerol, 0.02% sodium azide)
Storage Instruction	Store at 4°C. For long term storage store at -20°C. Aliquot to avoid repeated freezing and thawing.
Note	This product contains sodium azide: a POISONOUS AND HAZARDOUS SUBSTANCE which should be handled by trained staff only.

## Applications

- Western Blot

Western blot analysis of Lane 1: RT-4, Lane 2: U-251 MG, Lane 3: Human Plasma, Lane 4: Liver, Lane 5: Tonsil with SNRPD1 polyclonal antibody (Cat # PAB23487).

- Immunohistochemistry (Formalin/PFA-fixed paraffin-embedded sections)

Immunohistochemical staining of human kidney with SNRPD1 polyclonal antibody (Cat # PAB23487) shows strong nuclear positivity in cells of tubules.

## Gene Info — SNRPD1

Entrez GeneID	<a href="#">6632</a>
Protein Accession#	<a href="#">P62314</a>
Gene Name	SNRPD1
Gene Alias	HsT2456, SMD1, SNRPD
Gene Description	small nuclear ribonucleoprotein D1 polypeptide 16kDa
Omim ID	<a href="#">601063</a>
Gene Ontology	<a href="#">Hyperlink</a>
Gene Summary	This gene encodes a small nuclear ribonucleoprotein that belongs to the SNRNP core protein family. The protein may act as a charged protein scaffold to promote SNRNP assembly or strengthen SNRNP-SNRNP interactions through nonspecific electrostatic contacts with RNA. [provided by RefSeq]
Other Designations	Sm-D autoantigen small nuclear ribonucleoprotein D1 polypeptide (16kD) snRNP core protein D1

## Pathway

- [Systemic lupus erythematosus](#)