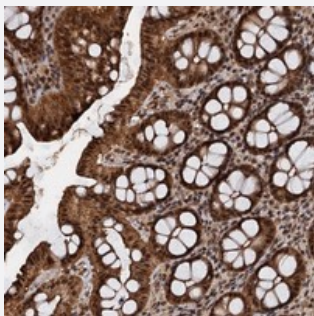


FAM216B polyclonal antibody

Catalog # PAB23475 Size 100 uL

Applications



Immunohistochemistry (Formalin/PFA-fixed paraffin-embedded sections)

Immunohistochemical staining of human colon with FAM216B polyclonal antibody (Cat # PAB23475) shows strong nuclear and cytoplasmic positivity in glandular cells at 1:50-1:200 dilution.

Specification

Product Description	Rabbit polyclonal antibody raised against recombinant FAM216B.
Immunogen	Recombinant protein corresponding to amino acids of human FAM216B.
Sequence	NWKRQQKLWNVPQLPFIRVPPSYDTSLKALNQGQQRYFYSIMRIYNSRPQWEALQTRYIHSLQH QQLLGYTQREALSYALVLRDSTKRASAKVAPQRTIPRK
Host	Rabbit
Reactivity	Human
Form	Liquid
Purification	Antigen affinity purification
Isotype	IgG
Recommend Usage	Immunohistochemistry (1:50-1:200) The optimal working dilution should be determined by the end user.
Storage Buffer	In PBS, pH 7.2 (40% glycerol, 0.02% sodium azide)

Storage Instruction

Store at 4°C. For long term storage store at -20°C.
Aliquot to avoid repeated freezing and thawing.

Note

This product contains sodium azide: a POISONOUS AND HAZARDOUS SUBSTANCE which should be handled by trained staff only.

Applications

- Immunohistochemistry (Formalin/PFA-fixed paraffin-embedded sections)

Immunohistochemical staining of human colon with FAM216B polyclonal antibody (Cat # PAB23475) shows strong nuclear and cytoplasmic positivity in glandular cells at 1:50-1:200 dilution.

Gene Info — FAM216B

Entrez GeneID[144809](#)**Protein Accession#**[Q8N7L0](#)**Gene Name**

FAM216B

Gene Alias

RP11-366O17.1, C13orf30

Gene Description

family with sequence similarity 216, member B

Gene Ontology[Hyperlink](#)**Gene Summary**

protein FAM216B; uncharacterized protein C13orf30

Other Designations

protein FAM216B; uncharacterized protein C13orf30