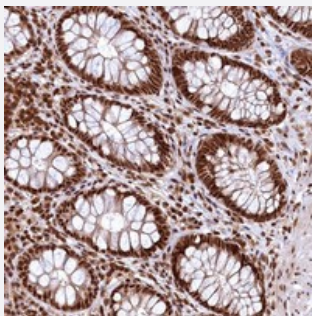


RSRC2 polyclonal antibody

Catalog # PAB23473 Size 100 uL

Applications



Immunohistochemistry (Formalin/PFA-fixed paraffin-embedded sections)

Immunohistochemical staining of human rectum with RSRC2 polyclonal antibody (Cat # PAB23473) shows strong nuclear positivity in glandular cells at 1:500-1:1000 dilution.

Specification

Product Description	Rabbit polyclonal antibody raised against recombinant RSRC2.
Immunogen	Recombinant protein corresponding to amino acids of human RSRC2.
Sequence	KKEGDKSQSAEIWEKLNFGNKDQNVKFRKLMGKSEDEAGCSSVDEESYKTLKQQEEVFRNLD AQYEMARSQTHQTRGMGLGFT
Host	Rabbit
Reactivity	Human
Form	Liquid
Purification	Antigen affinity purification
Isotype	IgG
Recommend Usage	Immunohistochemistry (1:500-1:1000) Western Blot (1:250-1:500) The optimal working dilution should be determined by the end user.
Storage Buffer	In PBS, pH 7.2 (40% glycerol, 0.02% sodium azide)

Storage Instruction

Store at 4°C. For long term storage store at -20°C.
Aliquot to avoid repeated freezing and thawing.

Note

This product contains sodium azide: a POISONOUS AND HAZARDOUS SUBSTANCE which should be handled by trained staff only.

Applications

- Western Blot
- Immunohistochemistry (Formalin/PFA-fixed paraffin-embedded sections)

Immunohistochemical staining of human rectum with RSRC2 polyclonal antibody (Cat # PAB23473) shows strong nuclear positivity in glandular cells at 1:500-1:1000 dilution.

Gene Info — RSRC2

Entrez GeneID[65117](#)**Protein Accession#**[Q7L4I2](#)**Gene Name**

RSRC2

Gene Alias

FLJ11021

Gene Description

arginine/serine-rich coiled-coil 2

Gene Ontology[Hyperlink](#)**Other Designations**

-