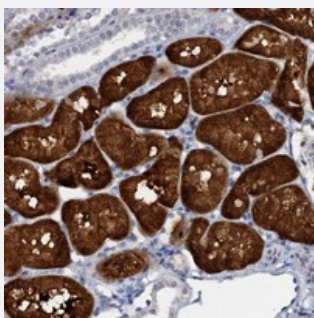


C15orf39 polyclonal antibody

Catalog # PAB23467 Size 100 uL

Applications



Immunohistochemistry (Formalin/PFA-fixed paraffin-embedded sections)

Immunohistochemical staining of human kidney with C15orf39 polyclonal antibody (Cat # PAB23467) shows strong cytoplasmic positivity in tubular cells.

Specification

Product Description	Rabbit polyclonal antibody raised against recombinant C15orf39.
Immunogen	Recombinant protein corresponding to amino acids of human C15orf39.
Sequence	LCDAISGSVAHSPPEKLREWLETAGPWGQAAWQDCQGVQGLLAKLLSQLQRFDRTHRCPPFPHV VRGAIFVPIHLVKERLFPRLPPASVDHVL
Host	Rabbit
Reactivity	Human
Form	Liquid
Purification	Antigen affinity purification
Isotype	IgG
Recommend Usage	Immunohistochemistry (1:200-1:500) The optimal working dilution should be determined by the end user.
Storage Buffer	In PBS, pH 7.2 (40% glycerol, 0.02% sodium azide)

Storage Instruction

Store at 4°C. For long term storage store at -20°C.
Aliquot to avoid repeated freezing and thawing.

Note

This product contains sodium azide: a POISONOUS AND HAZARDOUS SUBSTANCE which should be handled by trained staff only.

Applications

- Immunohistochemistry (Formalin/PFA-fixed paraffin-embedded sections)

Immunohistochemical staining of human kidney with C15orf39 polyclonal antibody (Cat # PAB23467) shows strong cytoplasmic positivity in tubular cells.

Gene Info — C15orf39

Entrez GeneID[56905](#)**Protein Accession#**[Q6ZRI6](#)**Gene Name**

C15orf39

Gene Alias

DKFZp434H132, FLJ46337, MGC117209

Gene Description

chromosome 15 open reading frame 39

Gene Ontology[Hyperlink](#)**Other Designations**

OTTHUMP00000183480|hypothetical protein LOC56905