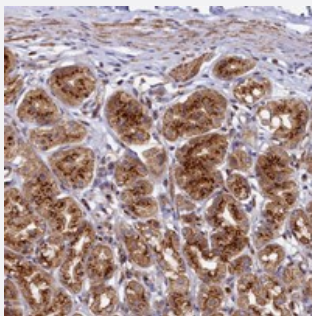


# BET1L polyclonal antibody

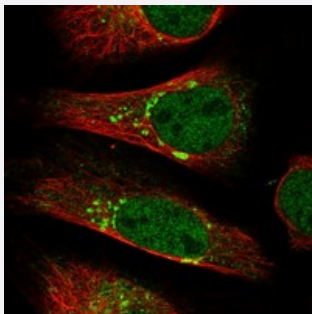
Catalog # PAB23453      Size 100 uL

## Applications



### Immunohistochemistry (Formalin/PFA-fixed paraffin-embedded sections)

Immunohistochemical staining of human stomach with BET1L polyclonal antibody (Cat # PAB23453) shows strong granular cytoplasmic positivity in glandular cells.



### Immunofluorescence

Immunofluorescent staining of human cell line U-2 OS with BET1L polyclonal antibody (Cat # PAB23453) at 1-4 ug/mL dilution shows positivity in nucleus but not nucleoli and golgi apparatus.

## Specification

Product Description	Rabbit polyclonal antibody raised against recombinant BET1L.
Immunogen	Recombinant protein corresponding to amino acids of human BET1L.
Sequence	MADWARAQSPGAVEEILDRENKRMADSLASKVTRLKSLALDIDRDAEDQNRYL DGMDSDF TSM TSLLTGSVKRFSTMARSGQ
Host	Rabbit
Reactivity	Human
Form	Liquid

<b>Purification</b>	Antigen affinity purification
<b>Isotype</b>	IgG
<b>Recommend Usage</b>	Immunohistochemistry (1:1000-1:2500) Immunofluorescence (1-4 ug/mL) The optimal working dilution should be determined by the end user.
<b>Storage Buffer</b>	In PBS, pH 7.2 (40% glycerol, 0.02% sodium azide)
<b>Storage Instruction</b>	Store at 4°C. For long term storage store at -20°C. Aliquot to avoid repeated freezing and thawing.
<b>Note</b>	This product contains sodium azide: a POISONOUS AND HAZARDOUS SUBSTANCE which should be handled by trained staff only.

## Applications

- Immunohistochemistry (Formalin/PFA-fixed paraffin-embedded sections)

Immunohistochemical staining of human stomach with BET1L polyclonal antibody (Cat # PAB23453) shows strong granular cytoplasmic positivity in glandular cells.

- Immunofluorescence

Immunofluorescent staining of human cell line U-2 OS with BET1L polyclonal antibody (Cat # PAB23453) at 1-4 ug/mL dilution shows positivity in nucleus but not nucleoli and golgi apparatus.

## Gene Info — BET1L

<b>Entrez GeneID</b>	<a href="#">51272</a>
<b>Protein Accession#</b>	<a href="#">Q9NYM9</a>
<b>Gene Name</b>	BET1L
<b>Gene Alias</b>	BET1L1, GOLIM3, GS15, HSPC197
<b>Gene Description</b>	blocked early in transport 1 homolog (S. cerevisiae)-like
<b>Gene Ontology</b>	<a href="#">Hyperlink</a>
<b>Other Designations</b>	OTTHUMP00000147612 OTTHUMP00000147613 blocked early in transport 1 homolog (S. cerevisiae) like golgi SNARE 15 kDa protein golgi integral membrane protein 3

## Pathway

- [SNARE interactions in vesicular transport](#)